



MyTV SDI (Ubuntu OS) User's Guide

This document is for informational purposes only and in no way shall be interpreted or construed to create any warranties of any kind, either express or implied, regarding the information contained herein.

Third Party Information

This document may contain links to third party websites that are not under the control of MicroVideo Learning Systems, Inc. ("MVLS") and MVLS is not responsible for the content on any linked site. If you access a third party website mentioned in this document, then you do so at your own risk. MVLS provides these links only as a convenience, and the inclusion of any link does not imply that MVLS endorses or accepts any responsibility for the content on third party sites.

This document may refer to third party software that is not licensed, sold, distributed or otherwise endorsed by MVLS. Please ensure that any and all use of MVLS® software and third party software is properly licensed.

Trademarks

Adobe and Flash are either registered trademarks or trademarks of Adobe Systems Incorporated in the United States and/or other countries.

Microsoft and Silverlight are either registered trademarks or trademarks of Microsoft Corporation in the United States and/or other countries.

QuickTime, iPhone, iPad and iPod are either registered trademarks or trademarks of Apple, Inc. in the United States and/or other countries.

Other product names, logos, designs, titles, words or phrases mentioned may be third party registered trademarks or trademarks in the United States and/or other countries.

Third party trademarks are used solely to identify and describe third party products as being compatible with MVLS products. MVLS is in no way sponsored, endorsed by or otherwise affiliated with any such third party trademark owners. If you are running a perpetual edition you may be required to enter multiple license keys into the Server.license file to enable paid for AddOns (or something like that).

Contents

The MyTV Video Scheduling System Overview:	4
The MyTV Video Scheduling System Tutorial:	5
1.Launch the MyTV Administrator:.....	5
2. Login to the MyTV Administrator:	5
3.Configure your Channel:	5
4.Add Inventory to the Database:.....	6
5.Create Playlists.....	7
6.Make a Playlist “Looping”:	9
7.Schedule Playlists:.....	10
8.Copy a Day’s Playlist to many other Days:.....	12
9.Manage Players:.....	12
10.Starting the MyTV Client (Player):	14

The MyTV Video Scheduling System Overview:

The MyTV Video Scheduling System is comprised of two components:

1. The MyTV Administrator
2. The MyTV Client (aka MyTV Player)

The MyTV Administrator is used to:

1. Create Channels
2. Add videos to the database
3. Create Playlists with the videos that have been added to the database
4. Schedule or “Loop” the Playlists
5. Manage the MyTV Players (aka MyTV Clients) and Streams (optional)
6. Launch “Instant Playlists”
7. Manage Users, and their Usernames and Passwords
8. Request User Licenses and Authenticate them

The MyTV Client (aka MyTV Player) is used to:

1. Play the looping or scheduled Channels’ playlists locally in full screen or window, in the default or optionally secondary monitor
or
2. Stream the looping or scheduled Channels’ playlists in MPEG2 with various protocols to the Chameleon Encoder or other destination

The MyTV Video Scheduling System Tutorial:

1. Launch the MyTV Administrator:



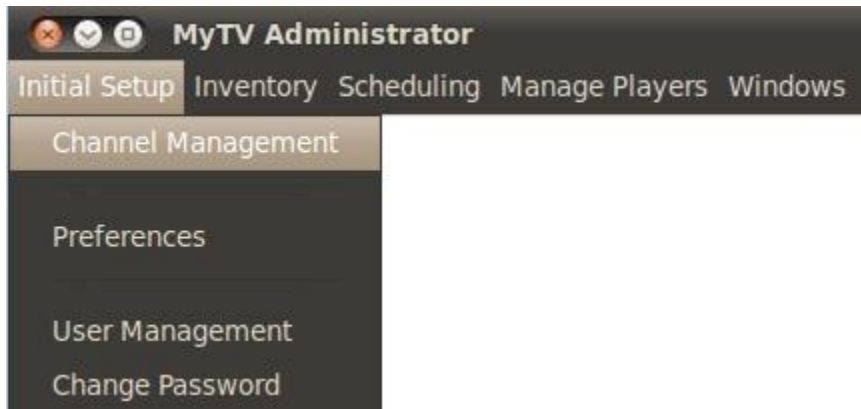
1. Double click on the MyTVAdmin icon on the desktop to launch the application.

2. Login to the MyTV Administrator:

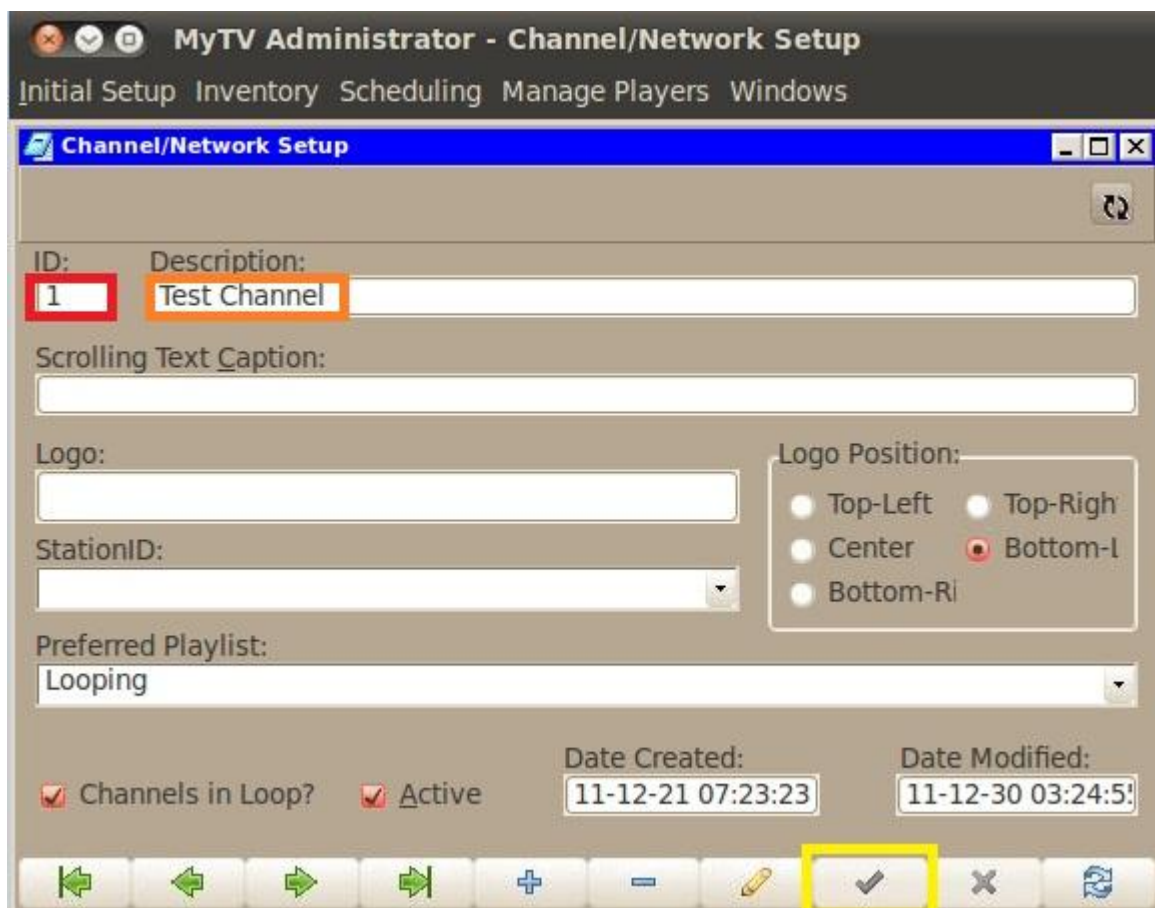


1. If you're operating the MyTV Video Scheduling System on the local PC, then accept the defaults as they are and click on OK. If you've already changed the username and password, then use the new settings, then click on OK.

3. Configure your Channel:



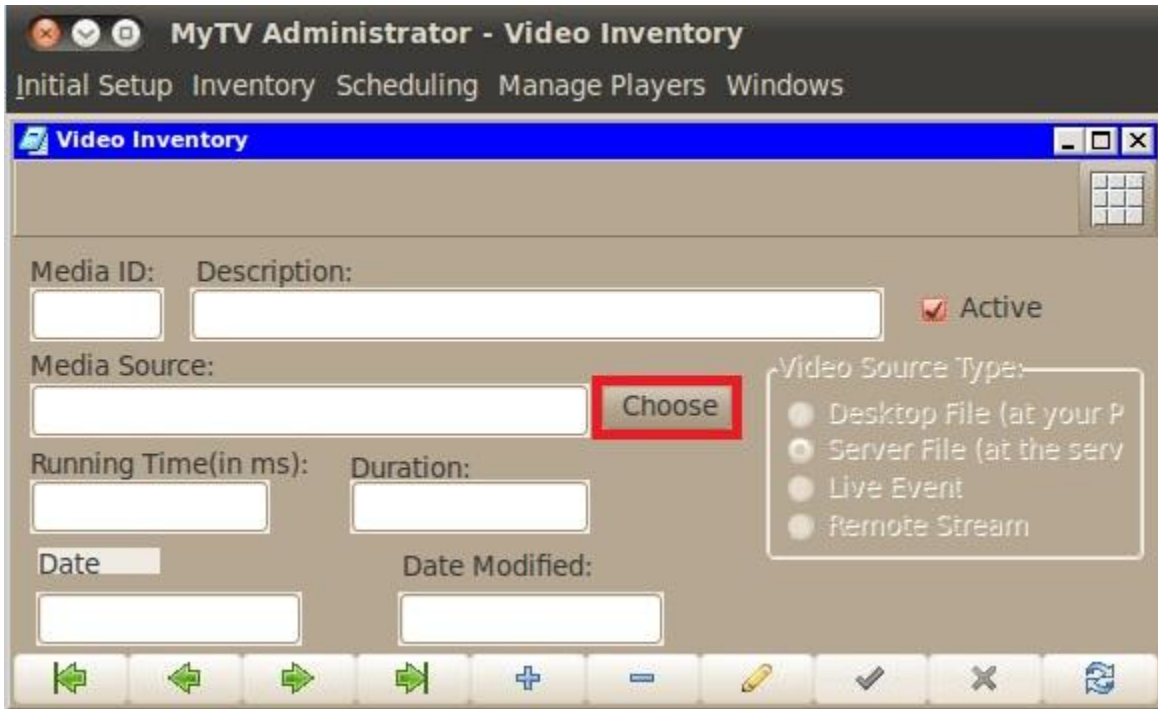
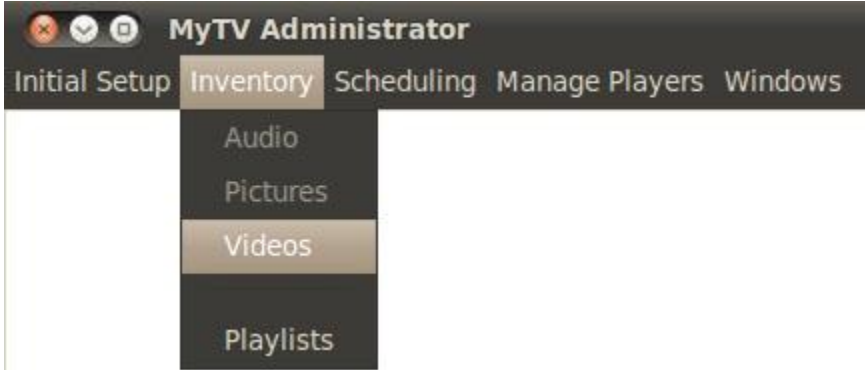
1. Click on Initial Setup, then Channel Management



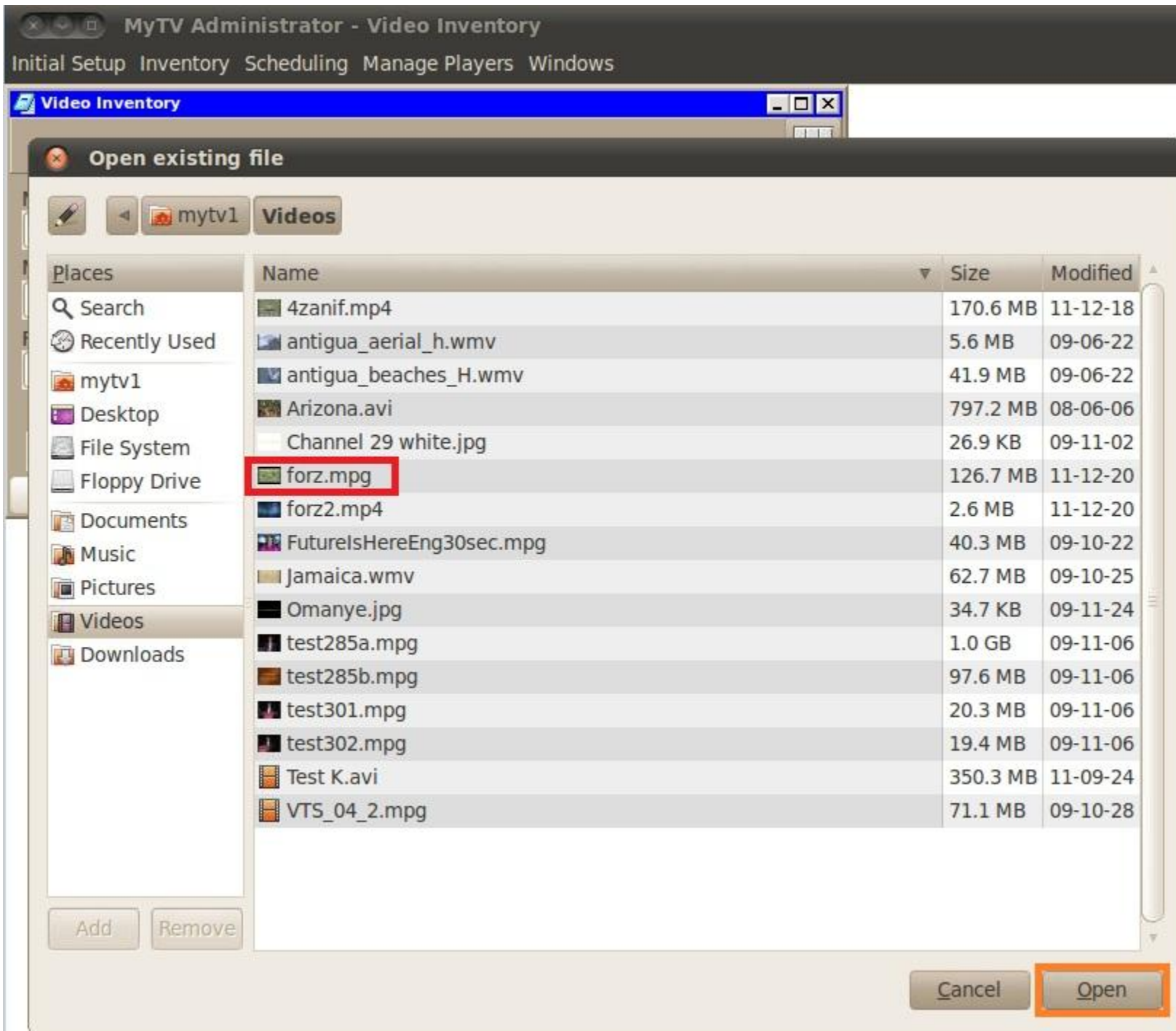
1. Add the Channel ID.
2. Add the Channel Description
3. Save the Changes by clicking on the Save button (check mark).
4. Close the Channel/Network Setup Window. (We'll come back later).

4.Add Inventory to the Database:

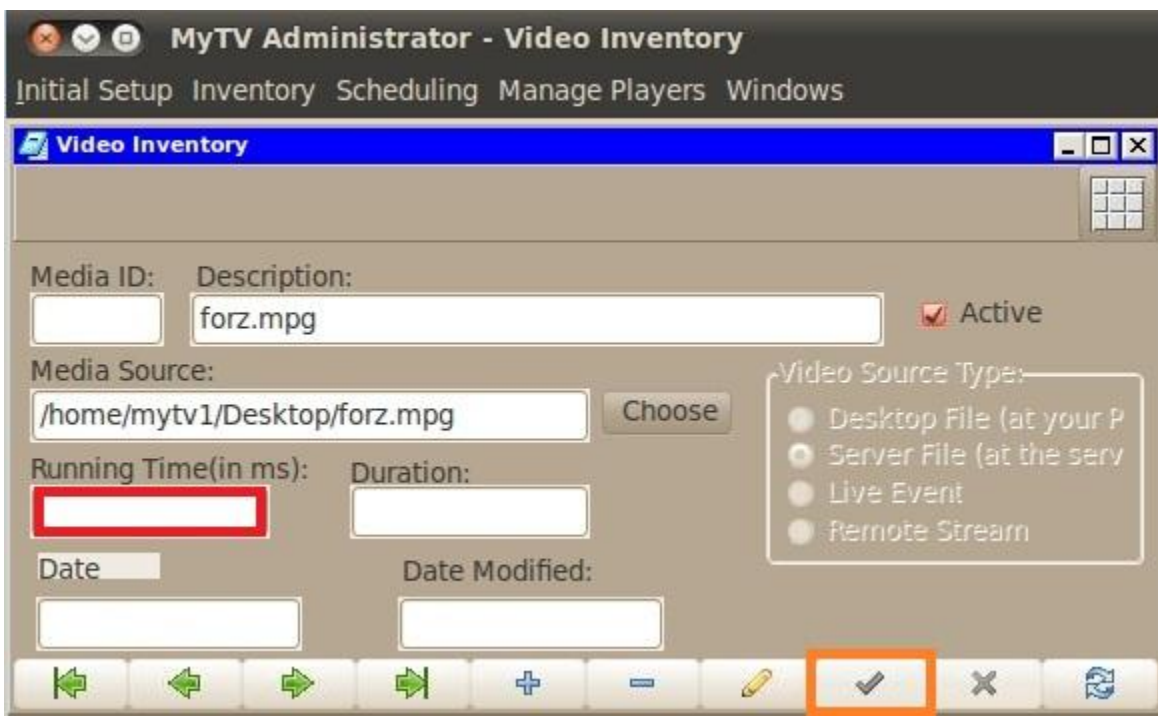
1. Click on Inventory, then the Videos option to add videos to the database.



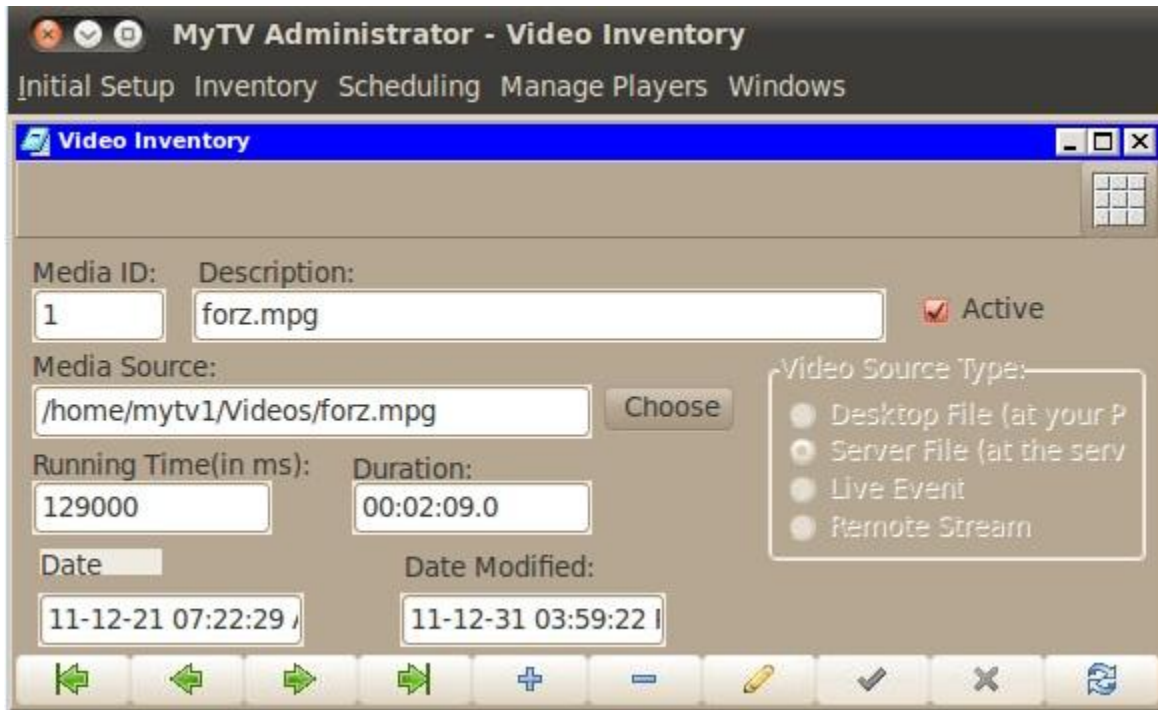
1. Click on the Choose button to select a video from your local (attached) drives. The videos do not need to be in any specific location, but cannot be moved once added to the database, otherwise the Scheduler won't be able to find the video.
2. Please note that the MyTV Video Scheduling System supports AVI, MPG1, MPG2, MP4, and WMV video formats.
3. The system does not support audio only files.
4. Use of FLV and MOV files is not recommended due to their proprietary nature and unpredictable playback.
5. If you have M4V files, please rename the extensions to .MP4, or they won't play.



1. Select a clip (you will need to copy videos to this PC, or attach an external drive with videos on it, if you don't have any to select).
2. Then click on the Open button.



1. If the clip added is an MPG2 clip, the running time (duration) may not be automatically added. Please add the running time (in milliseconds), then click on the save (check mark) button.



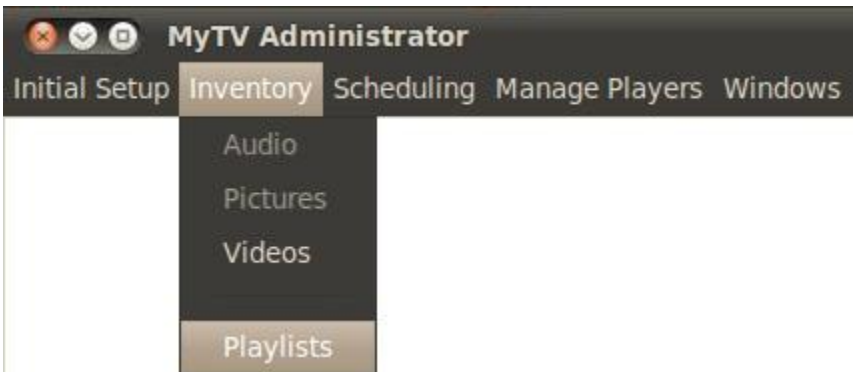
and the clip is saved to the database.

Note: Make sure to click on the Add button before clicking on the Choose button, or you might overwrite your video in the inventory.

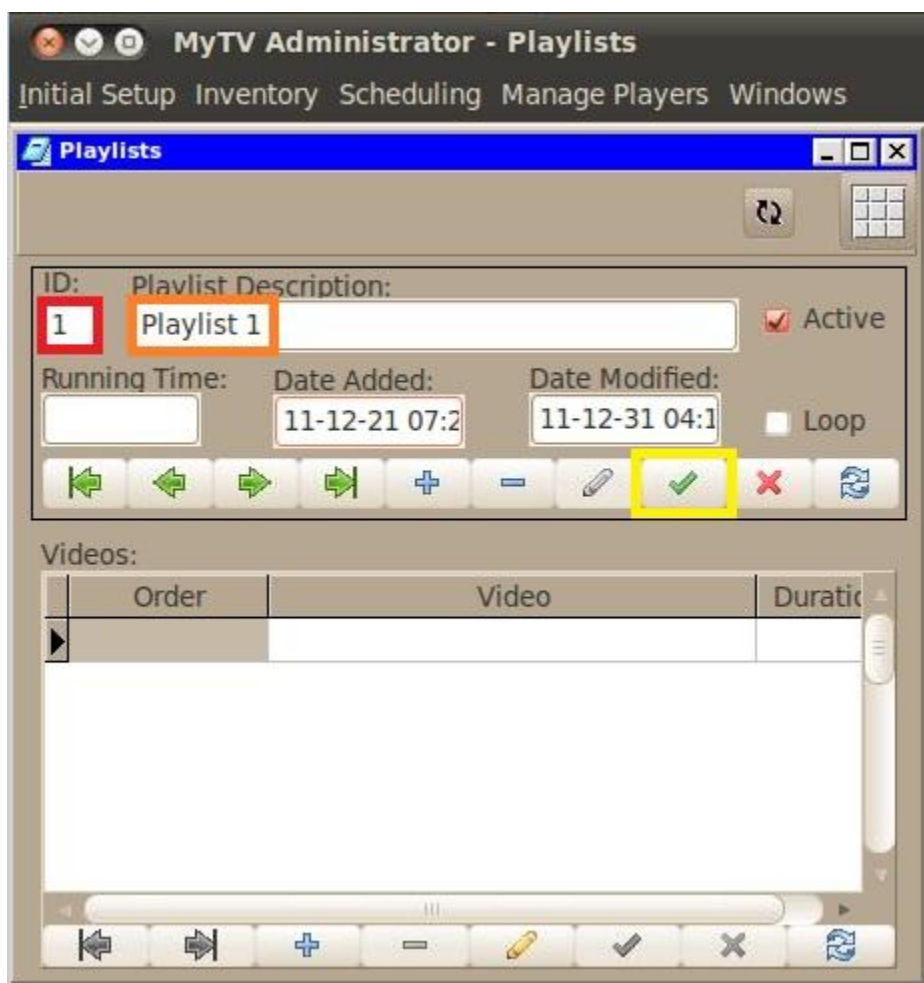
You may also want to give you clips coded names, like com_Bell_01_07_12, meaning “commercial for Bell, Jan. 7, 2012”, so as to organize the clips when they’re named.

We’ve added more clips, closed the Video Inventory page, and now move on to the Playlists page.

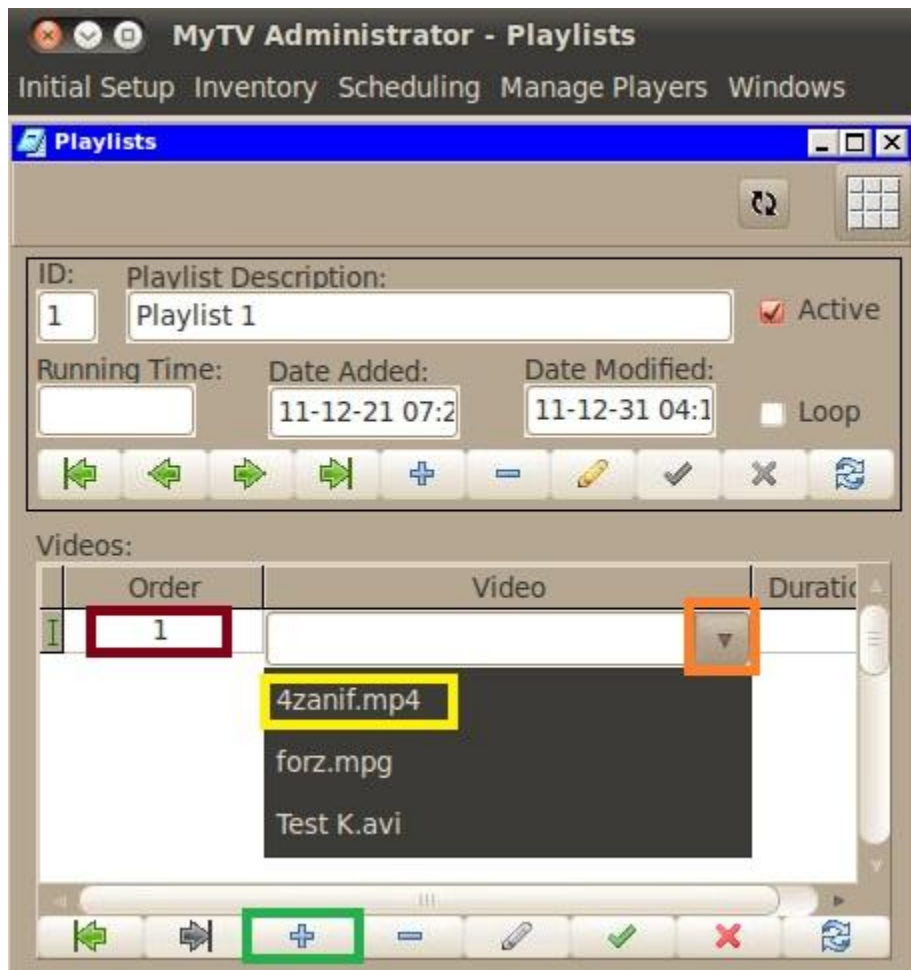
5.Create Playlists



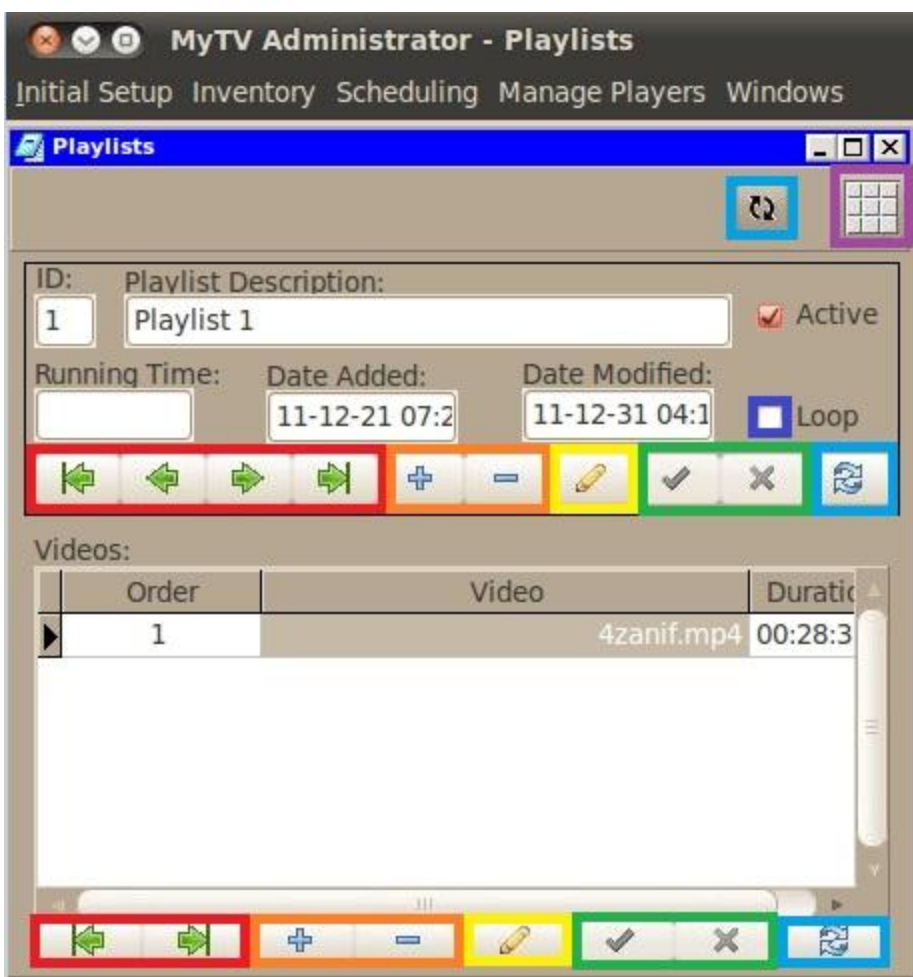
1. Click on Inventory, then Playlists from the menu.



1. Add the Playlist ID (a number, like 1)
2. Add the Playlist Description
3. Click on the Post (Save) Button to save the Playlist



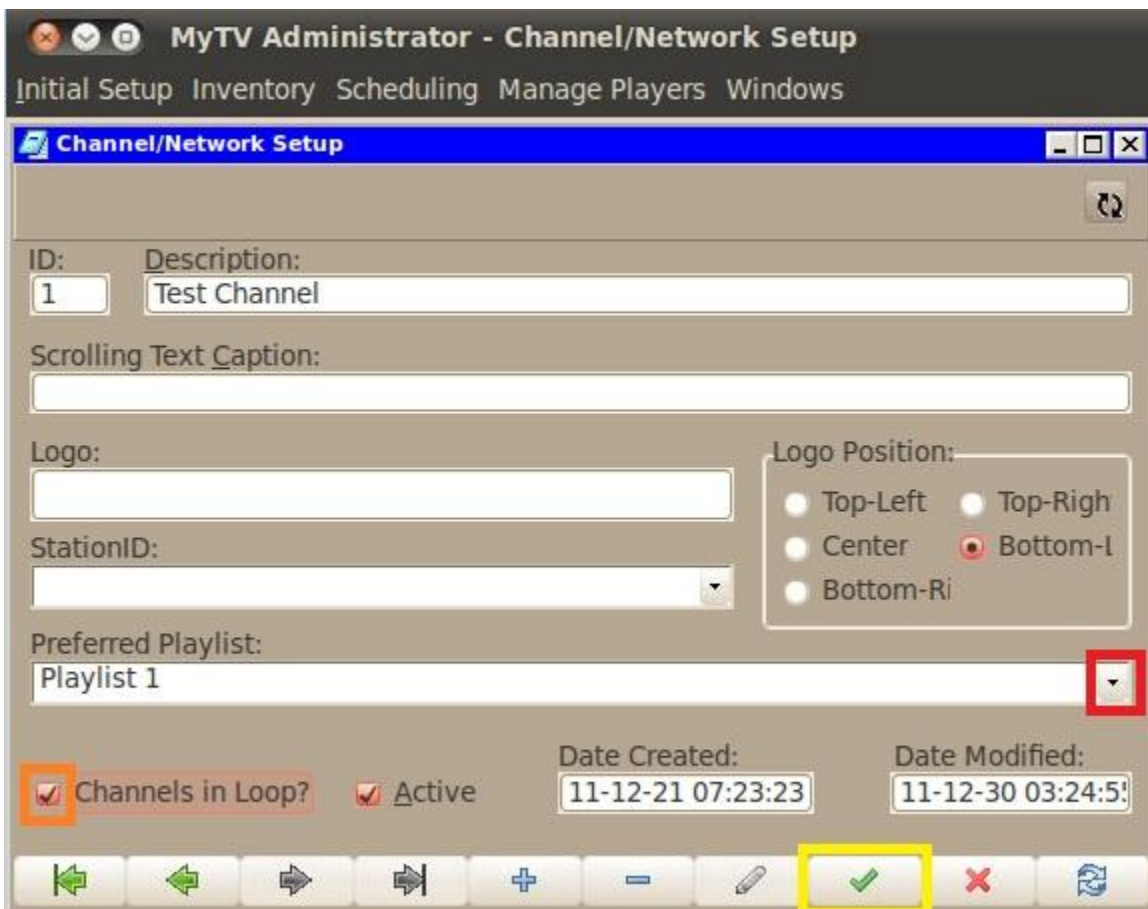
1. Add an order number (like one) to the order field.
2. Click on the drop down arrow in the Video field
3. Select a video from the drop down list.
4. Click on the Add button to add another clip
5. You can change the order of clips by changing their order numbers (but don't create duplicates or you'll get an error).
6. Save the Videos in the Playlist by clicking on the save button in the video field when you're done.
7. Select a video, then click on the Delete button (minus sign) to delete a video from the order.
8. To add more Playlists, click on the Add button in the Playlists section, and start over from item 1. (above).



You can mouse over any of the buttons to see the Tool Tip appear, telling you what the button does, but here's the run down:

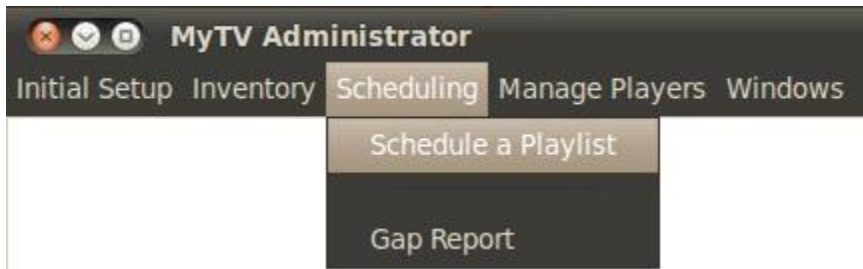
1. The green arrow buttons (red boxes) are the First, Prior, Next and Last Playlist buttons, and sort the Playlists according to their ID Numbers
2. The Insert (Add) and Delete buttons (orange boxes), do just that, they add or delete the current playlist displayed.
3. The Edit button (pencil, yellow box) allows you to edit the current Playlist
4. The Post (Save) and Cancel buttons (green boxes), either save the current changes, or cancel them.
5. The Refresh buttons (blue boxes) refresh either the current section (Playlist or Videos) while the top Refresh button refreshes the entire page.
6. The Toggle On or Off Grid View Button (purple box) shows you the entire list of Playlists at once

6. Make a Playlist "Looping":

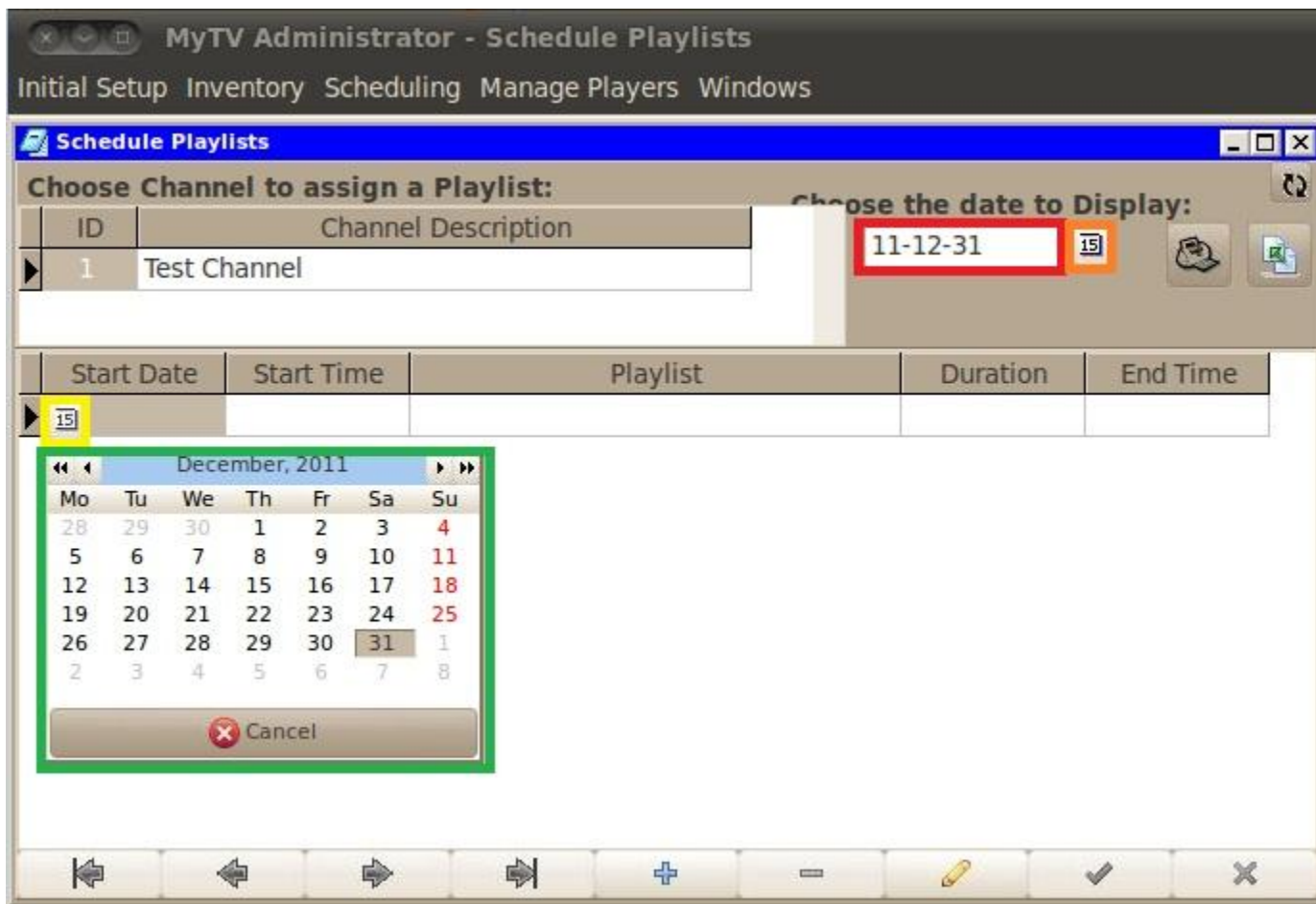


1. Go back to the Channel/Network Setup page, and click on the down arrow in the Preferred Playlist field. If no Playlists are displayed, click on the Refresh button.
2. Select a Playlist from the drop down list.
3. Select the Channels in Loop box to check it.
4. Click on the Post (Save) button to save the changes.
5. Now when the MyTV Client (aka Player) is launched, the Preferred Playlist will start, and continue to loop (repeat) until the MyTV Client is stopped.
6. If you don't want your Playlists to loop, but to play on schedule, deselect the Channels in Loop box.
7. Close this window.

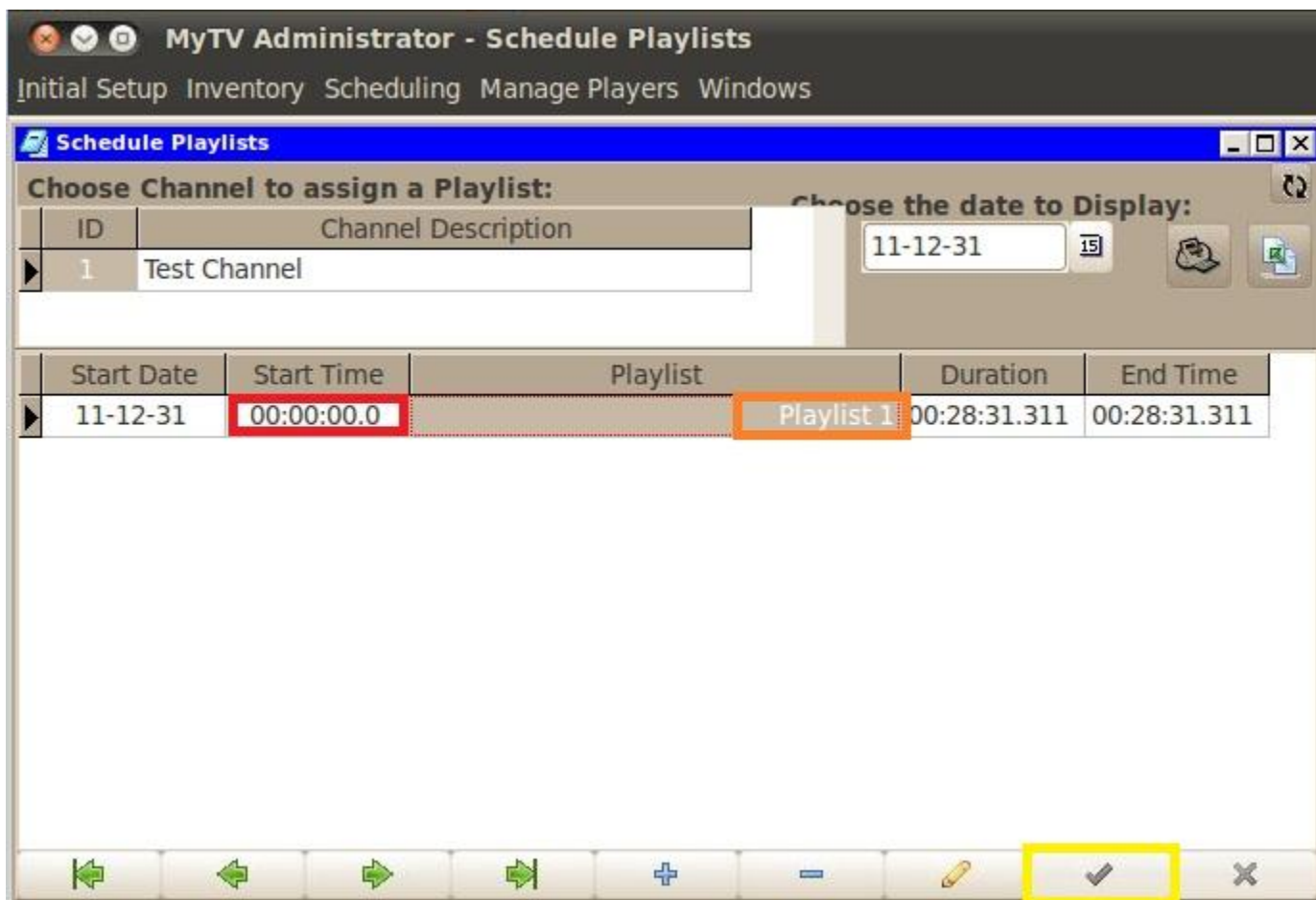
7. Schedule Playlists:



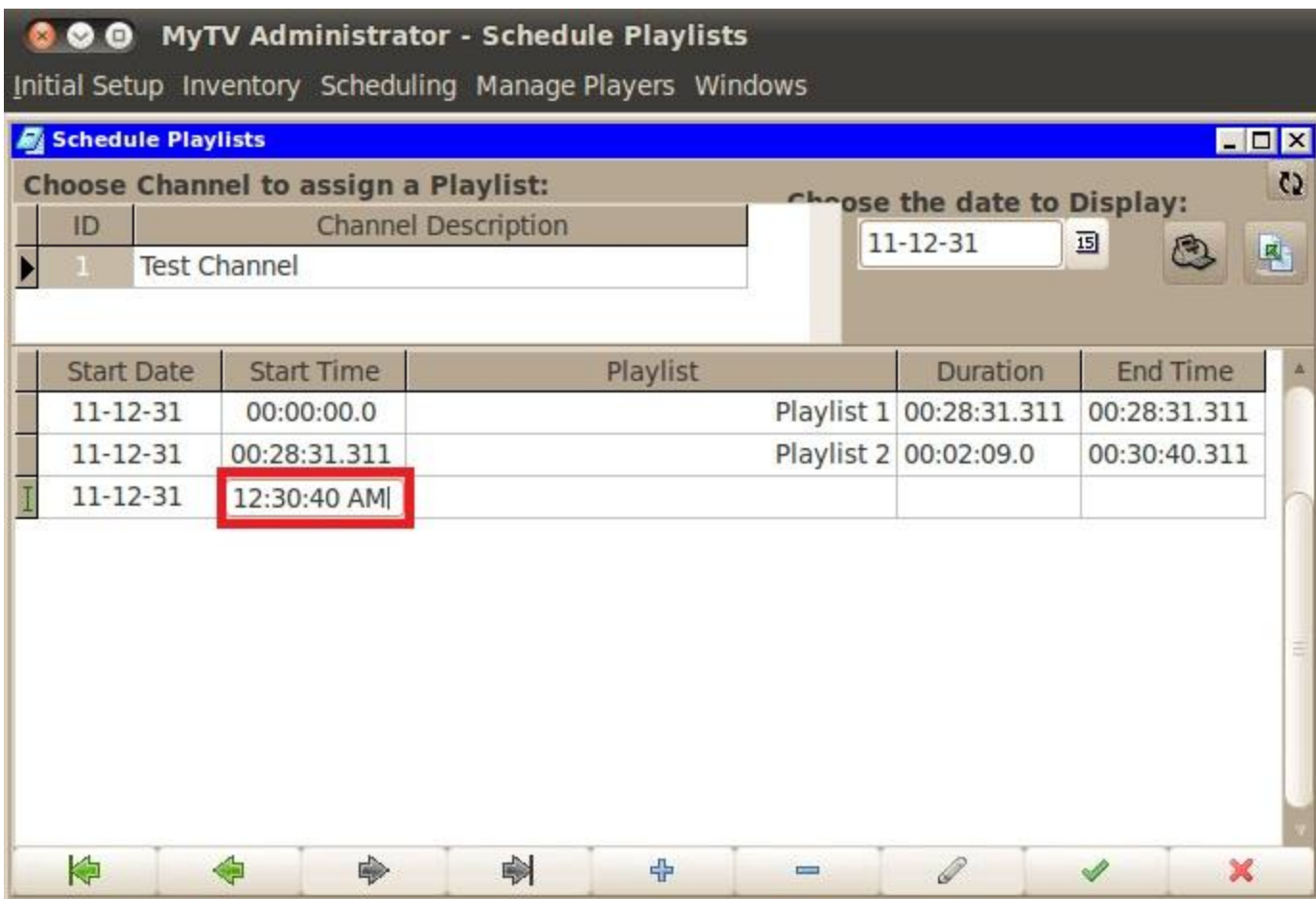
1. Click on "Scheduling", then "Schedule a Playlist" from the menu.



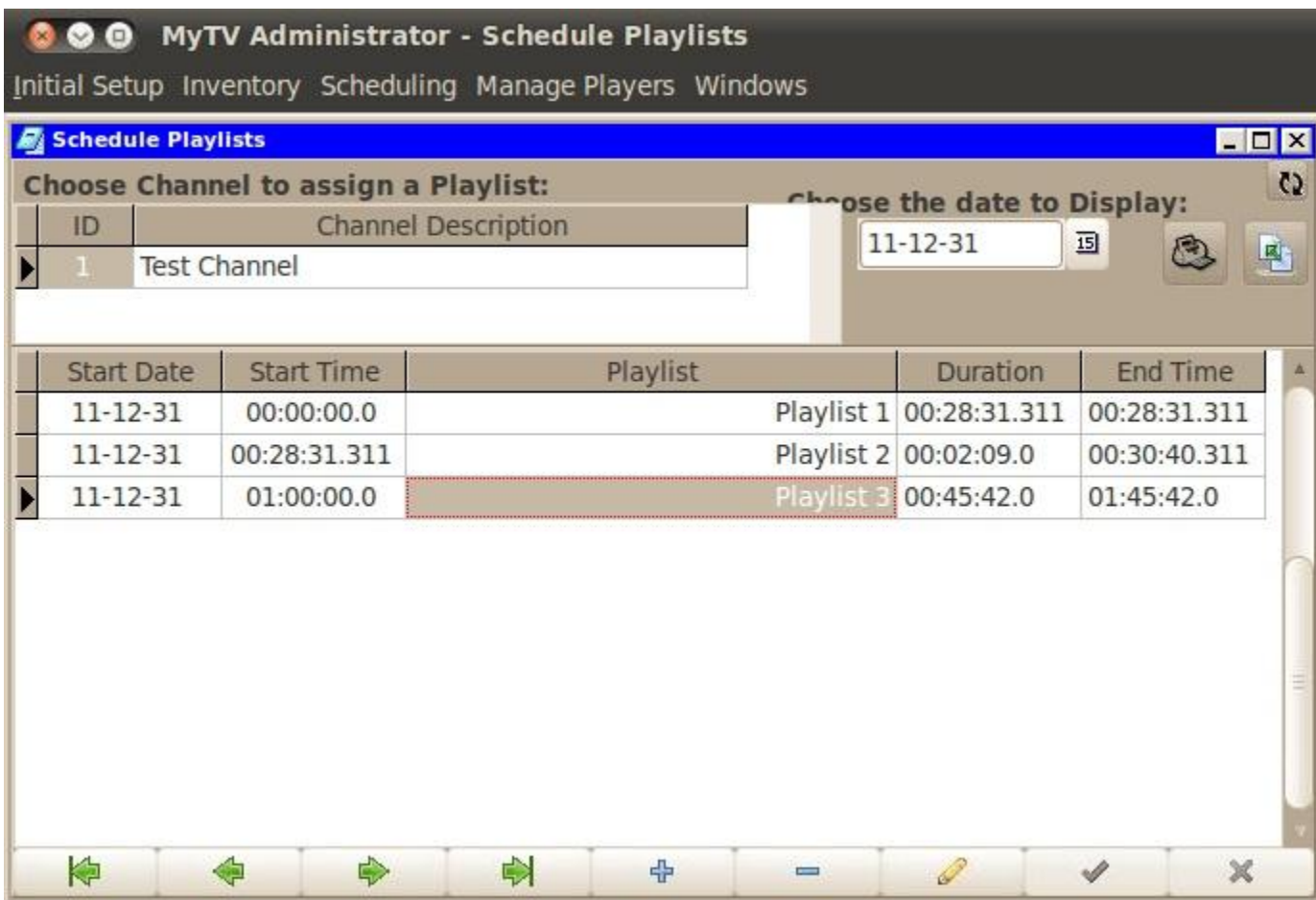
1. If you have created more than 1 Channel, scroll down to the Channel you wish to modify the schedule for.
2. If you wish to schedule playlists for a different date than the current date, click on the small Calendar Icon to the left of the date field, and select a different date.
3. Double-click in the Start Date field and a small Calendar Icon will appear.
4. Double click on the Calendar Icon, and a Calendar will appear.
5. Select the current date (you'll only have to this once, and it's required).



1. Type 0 in the Start Time field for 12 midnight, as the time format used is military.
2. Select a Playlist from the drop down list in the Playlist field.
3. Save the changes by clicking on the Post (save) button.
4. You'll see the Duration and End Time Fields have been populated with the proper information.

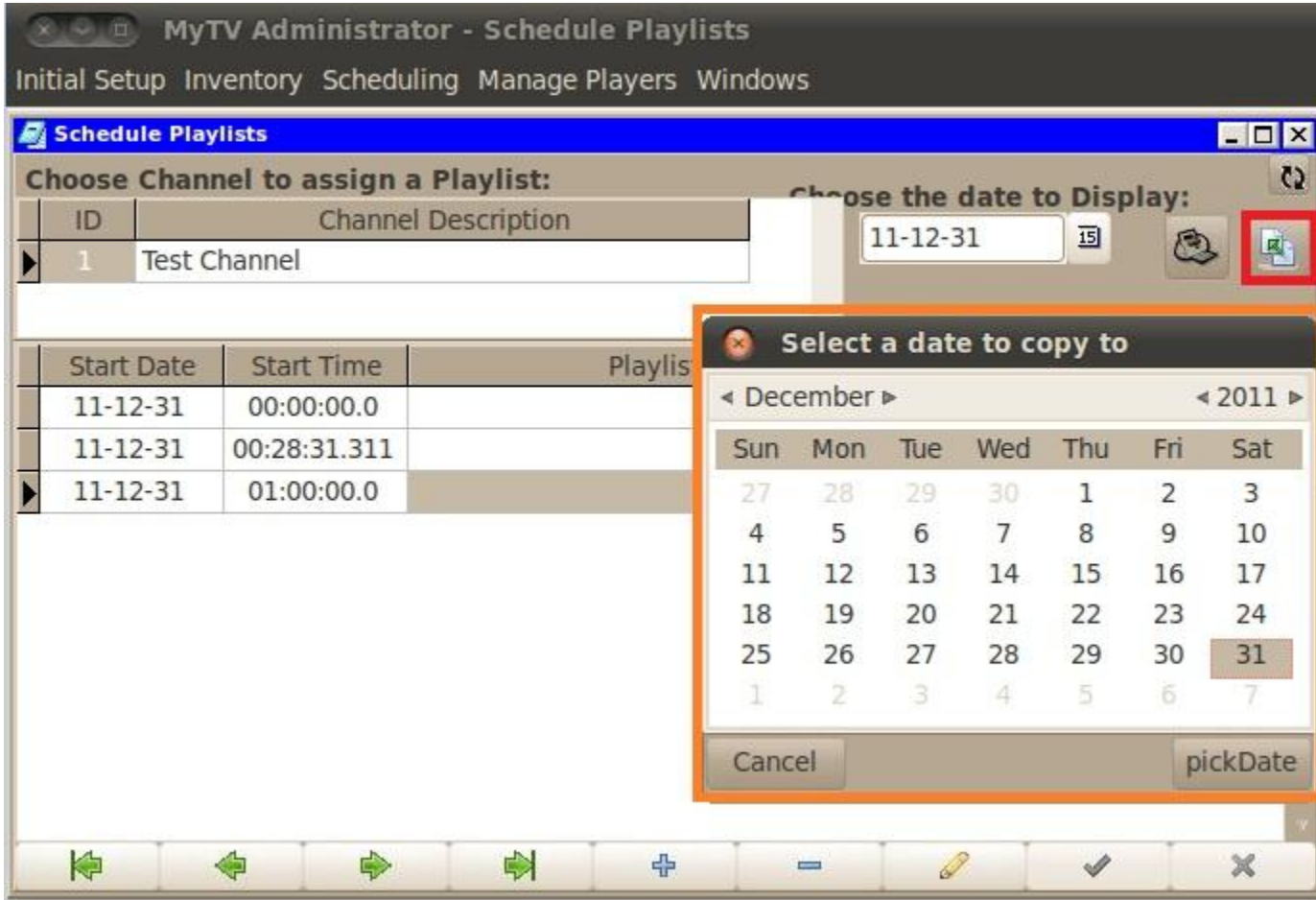


1. If you add another Playlist, then click to Add another, you'll see the date is added automatically, as is the time for the next scheduled playlist, in 12 hour time format.
2. If you don't want to start the next playlist at the set time, just double click in the Start Time field when you want to edit the time, and edit it, making sure to separate the hours, minutes and seconds with colons.
3. When you've edited the time, you'll see the time format change back to military time.
4. The last frame played will stay on the screen until the next scheduled playlist, so make sure you schedule correctly.

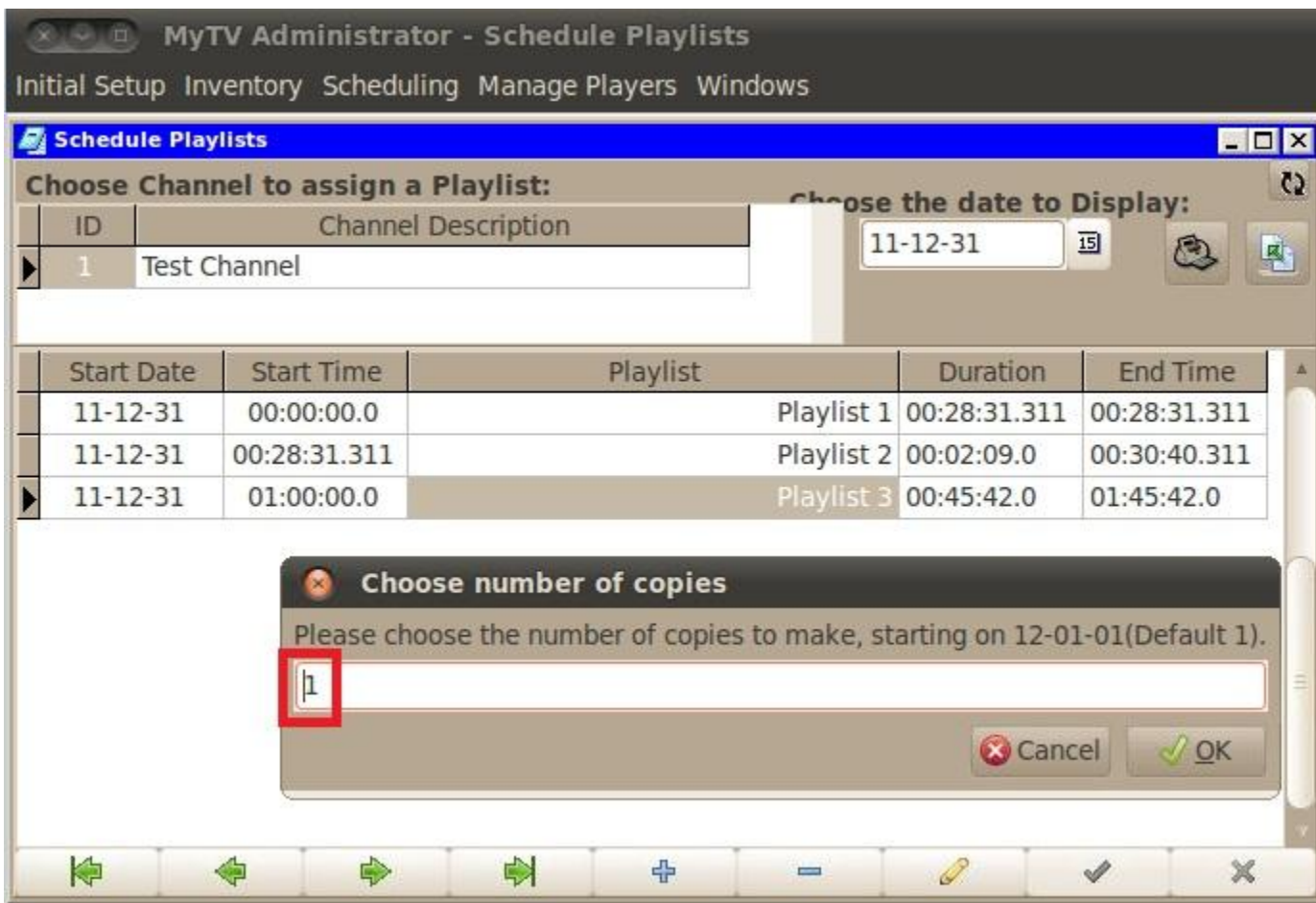


1. You can see from the image that video for the 31st of December 2012 will start at midnight (0 AM).
2. At 28 minutes, 31.311 seconds after midnight, Playlist 2 will start, and there will be no gaps between Playlist 1 and Playlist 2.
3. Playlist 2 will end at 30 minutes, 40.311 seconds after midnight, and the last frame of that playlist will be displayed until 1 AM, when Playlist 3 will begin.
4. You can delete scheduled playlists by selecting them and clicking on the Delete (minus) button.
5. Note that you must schedule a playlist at least 2 minutes before you start the MyTV Client (Player), or the scheduled Playlist could be missed, and nothing will play until the next scheduled playlist.

8. Copy a Day's Playlist to many other Days:

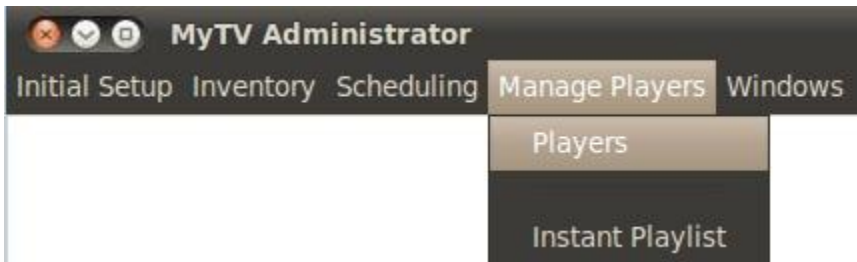


1. When you select the "Copy One Date to Many" button, a calendar pops up, prompting you to "Select a Date to Copy To".
2. This function will allow you to copy the current days' schedule to many other days, starting with the date that you select as the start date.



1. When you select the Start Date, the "Choose Number of Copies" dialog box pops up.
2. Whatever number you add in this field, the program will overwrite the schedules starting on the Start Date, plus the number of days you type here.
3. When you accept the changes, and check the days that you have copied this schedule to, you can see the schedules for those days are now the same as this one.
4. Close the Schedule Playlists window.

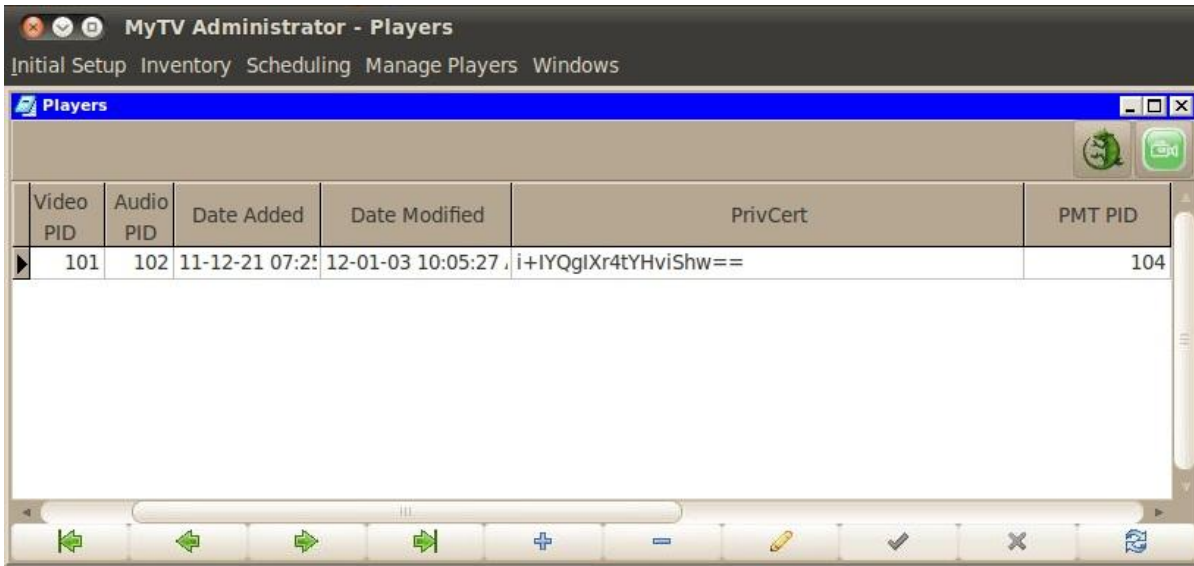
9. Manage Players:



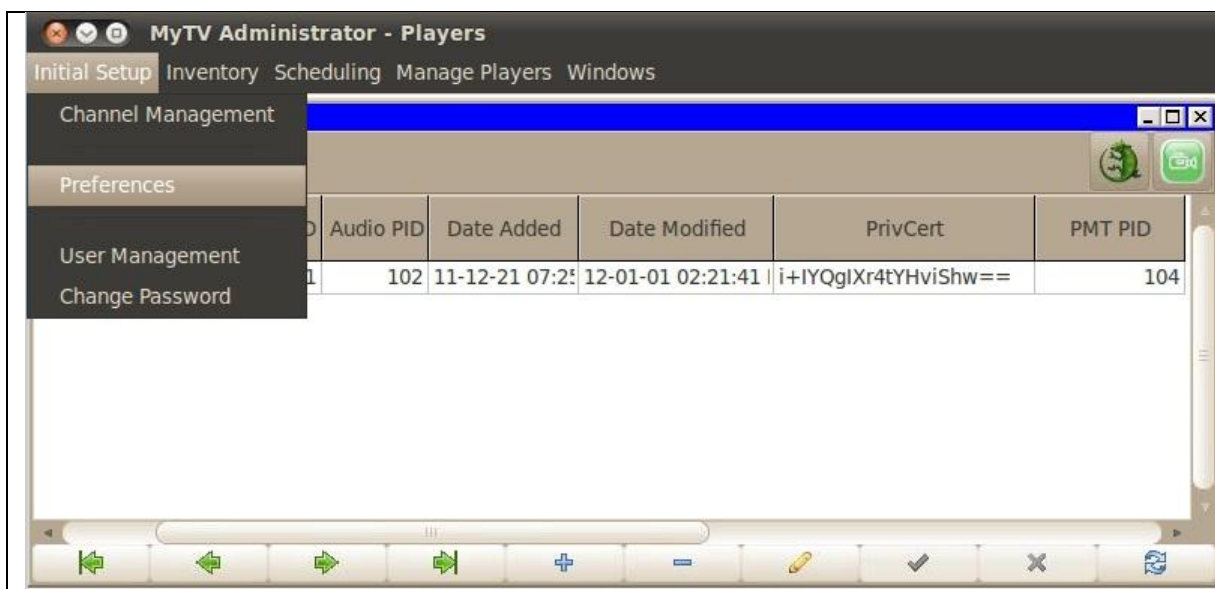
1. Click on "Manage Players", then Players.



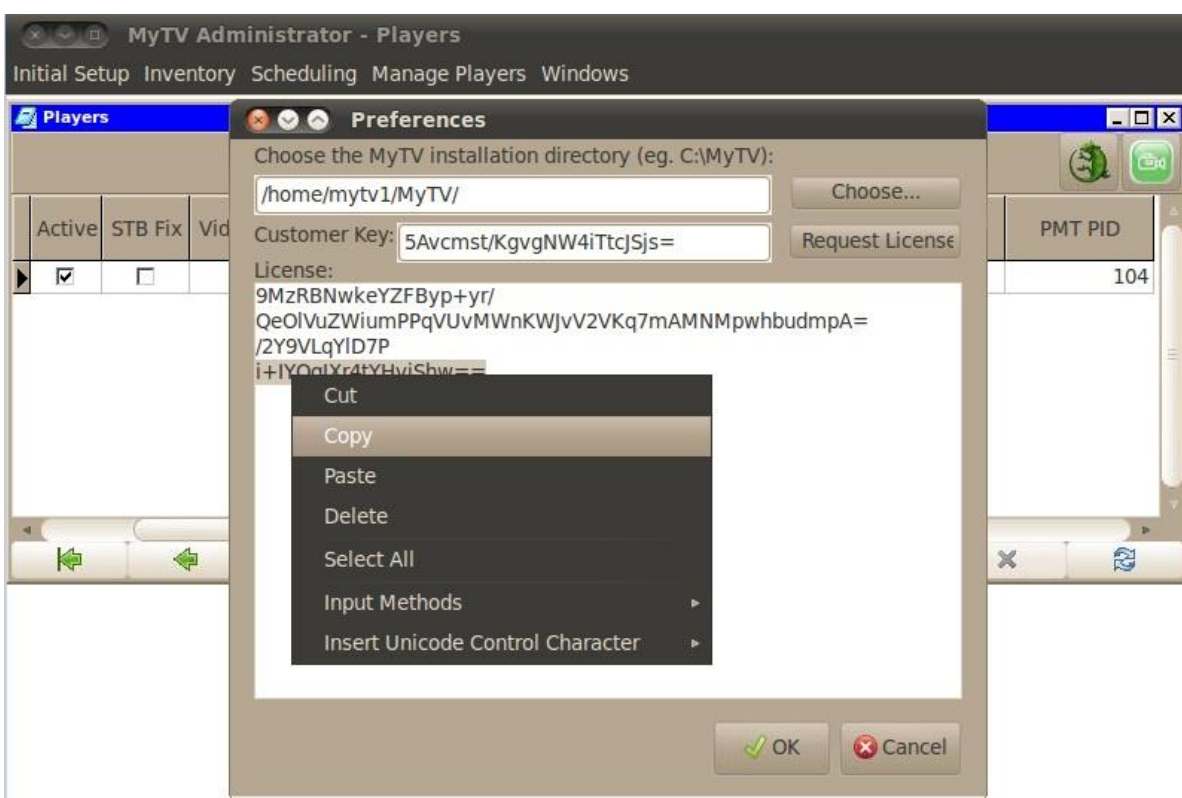
1. In the Player Name field, add a unique Player name (like SDI).
2. In the Type field, click on the down arrow and select Streamer, which is required when using SDI.
3. In the Channel field, select the appropriate Channel
4. In Streaming Destinations, type mytv://SDI1, which is where the Chameleon will receive the stream from
5. Set the Width, Height, Aspect Ratio and SoundSubSystem as shown.
6. Set the Channels you wish to be Active



1. Scroll to see the rest of the window
2. The Active check box must be selected in order for the Channel to operate
3. The STB Fix check box may be selected
4. The Video, Audio PID's must be unique
5. The PMT PID must be unique
6. See the following to set the PrivCert:



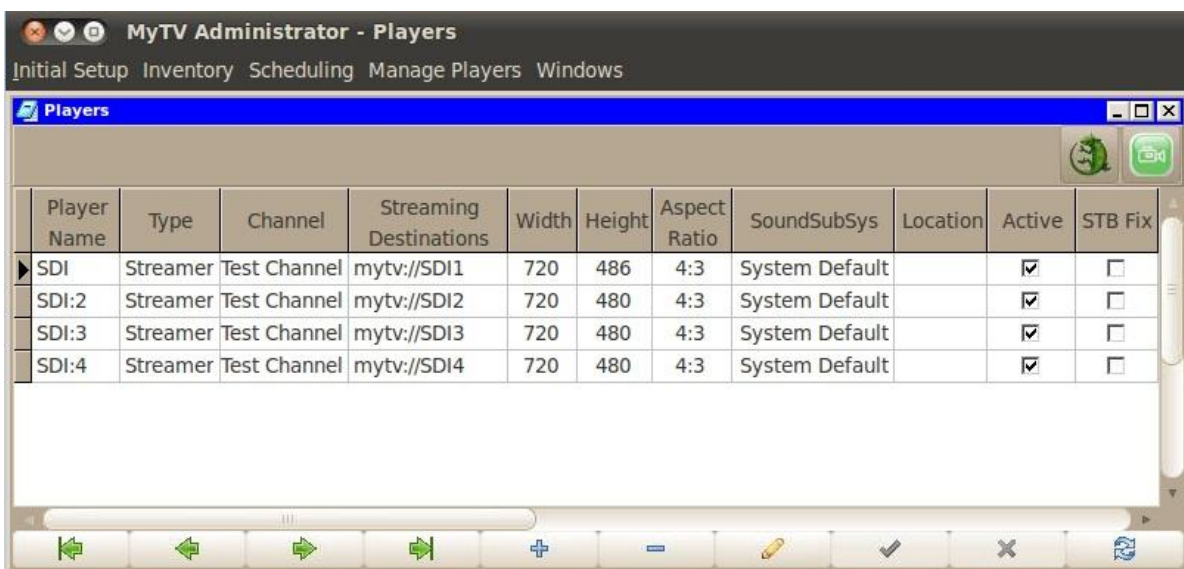
1. Click on "Initial Setup", then "Preferences" from the menu.



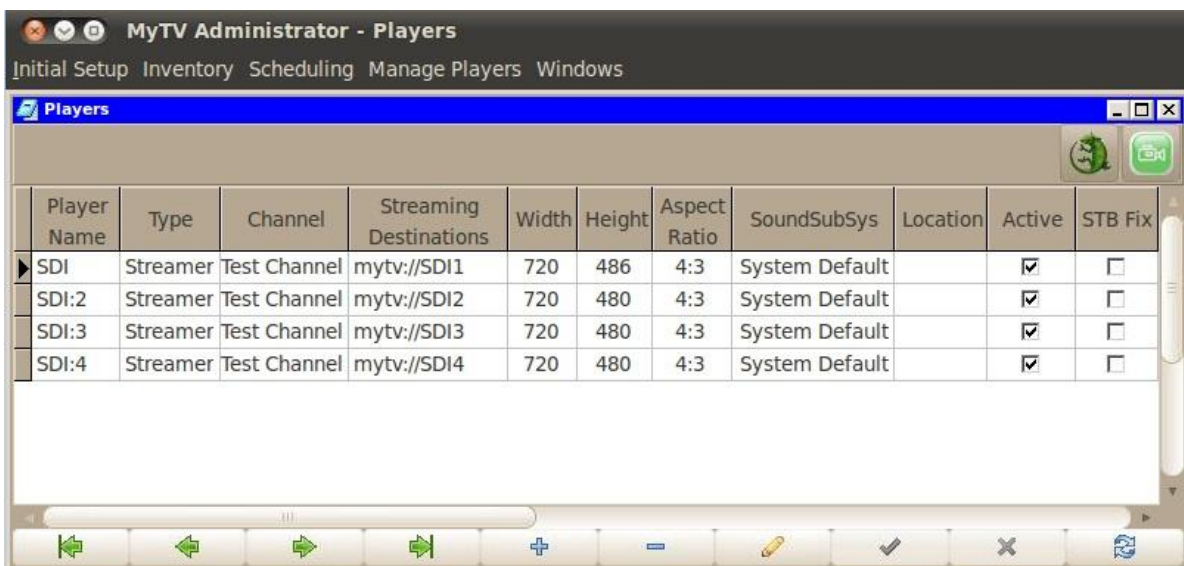
1. Highlight the last line of the license in the License field, then right mouse click and select Copy.
2. Close the Preferences window



1. Click in the PrivCert field (and highlight the content there if applicable) and then right-mouse click and select paste.
2. The license for the Channel is now added to the PrivCert field.
3. Save all entries by clicking on the Post (Save) button.
4. Follow the same procedures to add additional Channels. If you want to only start one MyTV Client to launch multiple channels, then the Player names must follow the syntax of the first Player Name, and add a colon, and additional identifier such as the following:

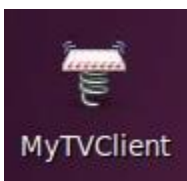


1. If the first Player Name is "SDI", then the subsequent Player Names should be "SDI:2", "SDI:3", etc., if you wish to start all of the Players with only one instance of the MyTV Client.



1. If the first Player Name is "SDI", then the subsequent Player Names should be "SDI2", "SDI3", etc., if you wish to start the Players with one instance of the MyTV Client per Channel.

10. Starting the MyTV Client (Player):



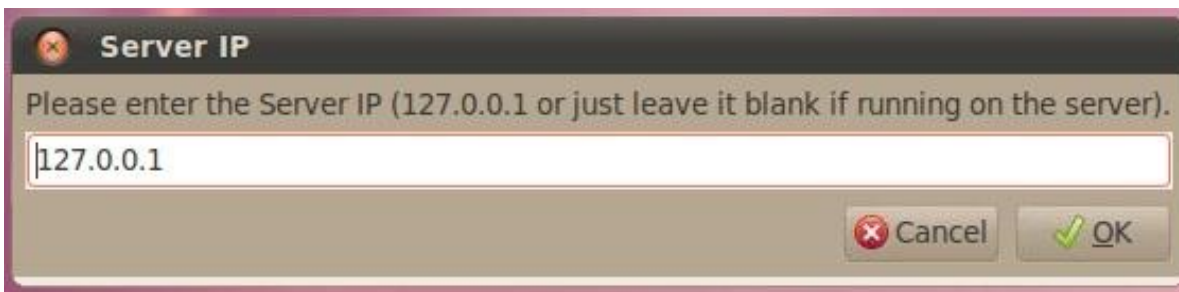
1. Double-click on the MyTV Client icon to launch the MyTV Client.



1. If this is the first time you've launched the MyTV Client, then you be asked some questions in order to configure which channel is to play and from where.



1. Enter the Player name that you chose for the channel you want to start in Manage Players.



1. If the Client is located on the same PC as the Admin, please accept the default settings. If not, please enter the IP address of the PC where the MyTV Admin resides (the server resides there as well).



1. If everything is configured correctly your MyTV Client will start.
2. If you had configured the MyTV Video Scheduler to use a "looping" playlist, the video should start to stream immediately.
3. If you scheduled video to play, then you'll need to wait until the next scheduled playlist for the video to start.
4. When scheduling playlists, make sure you give the schedule at least 2 minutes time to start after you've started the MyTV Client, or the video may not start. (The MyTV Client reads new schedules every minute).