



**MyTV**

**Video Scheduling**

**System**

**(Windows OS)**

**User's Guide**

**This document is for informational purposes only and in no way shall be interpreted or construed to create any warranties of any kind, either express or implied, regarding the information contained herein.**

**Third Party Information**

This document may contain links to third party websites that are not under the control of MicroVideo Learning Systems, Inc. ("MVLS") and MVLS is not responsible for the content on any linked site. If you access a third party website mentioned in this document, then you do so at your own risk. MVLS provides these links only as a convenience, and the inclusion of any link does not imply that MVLS endorses or accepts any responsibility for the content on third party sites.

This document may refer to third party software that is not licensed, sold, distributed or otherwise endorsed by MVLS. Please ensure that any and all use of MVLS® software and third party software is properly licensed.

**Trademarks**

Adobe and Flash are either registered trademarks or trademarks of Adobe Systems Incorporated in the United States and/or other countries.

Microsoft and Silverlight are either registered trademarks or trademarks of Microsoft Corporation in the United States and/or other countries.

QuickTime, iPhone, iPad and iPod are either registered trademarks or trademarks of Apple, Inc. in the United States and/or other countries.

Other product names, logos, designs, titles, words or phrases mentioned may be third party registered trademarks or trademarks in the United States and/or other countries.

Third party trademarks are used solely to identify and describe third party products as being compatible with MVLS products. MVLS is in no way sponsored, endorsed by or otherwise affiliated with any such third party trademark owners. If you are running a perpetual edition you may be required to enter multiple license keys into the Server.license file to enable paid for AddOns (or something like that).

# Table of Contents

The MyTV Video Scheduling System Overview: .....	4
The MyTV Video Scheduling System Tutorial: .....	5
1.Launch the MyTV Administrator:.....	5
2. Login to the MyTV Administrator: .....	5
3.Configure your Channel: .....	5
4.Add Video Inventory to the Database: .....	6
5.Create Playlists.....	7
6.Make a Playlist “Looping”: .....	8
7.Schedule Playlists:.....	9
8.Copy a Day’s Playlist to many other Days:.....	11
9.Manage Players:.....	12
10 Launch The MyTV Client: .....	13

## **The MyTV Video Scheduling System Overview:**

The MyTV Video Scheduling System is comprised of three components:

1. The MyTV Administrator
2. The MyTV Client (aka MyTV Player)
3. The Chameleon Encoder (optional)

### **The MyTV Administrator is used to:**

1. Create Channels
2. Add videos to the database
3. Create Playlists with the videos that have been added to the database
4. Schedule or “Loop” the Playlists
5. Manage the MyTV Players (aka MyTV Clients) and Streams (MP2)
6. Launch “Instant Playlists”
7. Manage Users, and their Usernames and Passwords
8. Request User Licenses and Authenticate them

### **The MyTV Client (aka MyTV Player) is used to:**

1. Play the looping or scheduled Channels’ playlists locally in full screen or window, in the default or optionally secondary monitor  
or
2. Stream the looping or scheduled Channels’ playlists in MP2 with various protocols to the Chameleon Encoder or other destination

### **The Chameleon Encoder (optional) is used to:**

1. Receive Audio and Video from streams or capture devices, and transcode the streams to other Codecs or optionally to other formats such as SDI or ASI.

## The MyTV Video Scheduling System Tutorial:

### 1. Launch the MyTV Administrator:



1. Double click on the MyTV icon on the desktop to launch the application

OR:

1. Click on the Windows Start button,
2. then All Programs,
3. then MyTV
4. then MyTV

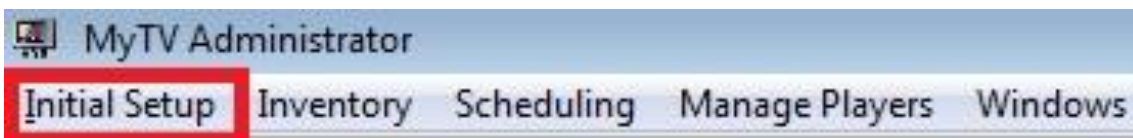


### 2. Login to the MyTV Administrator:

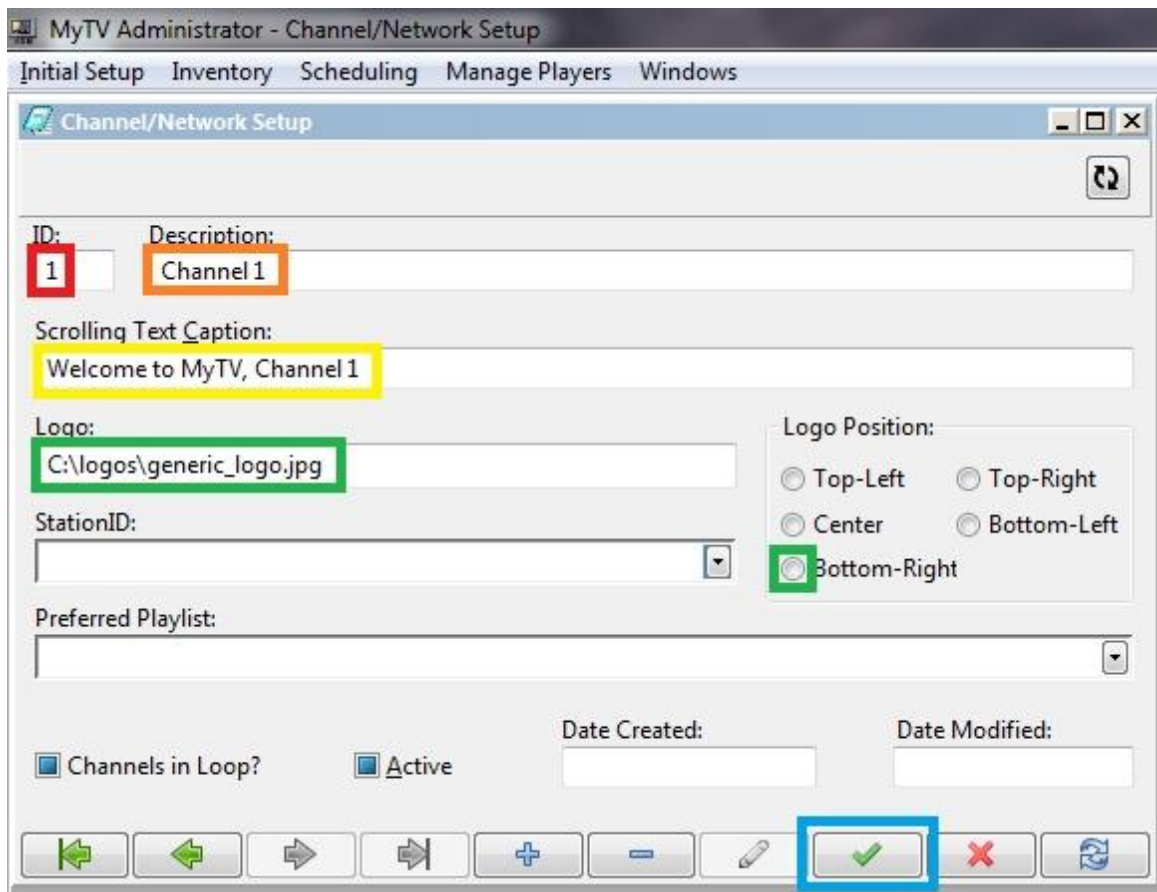


1. If you're operating the MyTV Video Scheduling System on the local PC, then accept the defaults as they are and click on OK. If you've already changed the username and password, then use the new settings, then click on OK.

### 3. Configure your Channel:

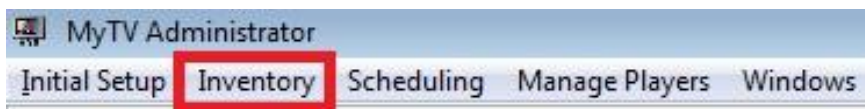


1. Click on Initial Setup, then Channel Management

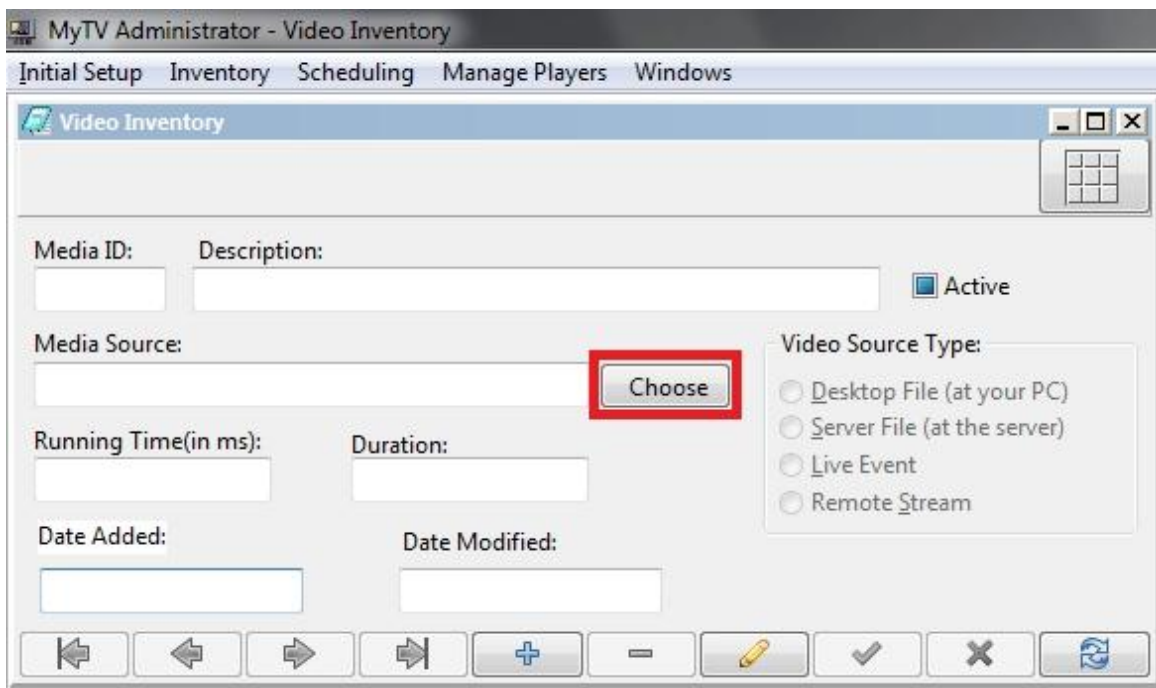


1. Add the Channel ID.
2. Add the Channel Description
3. Save the Changes by clicking on the Save button (check mark).
4. Close the Channel/Network Setup Window. (We'll come back later).

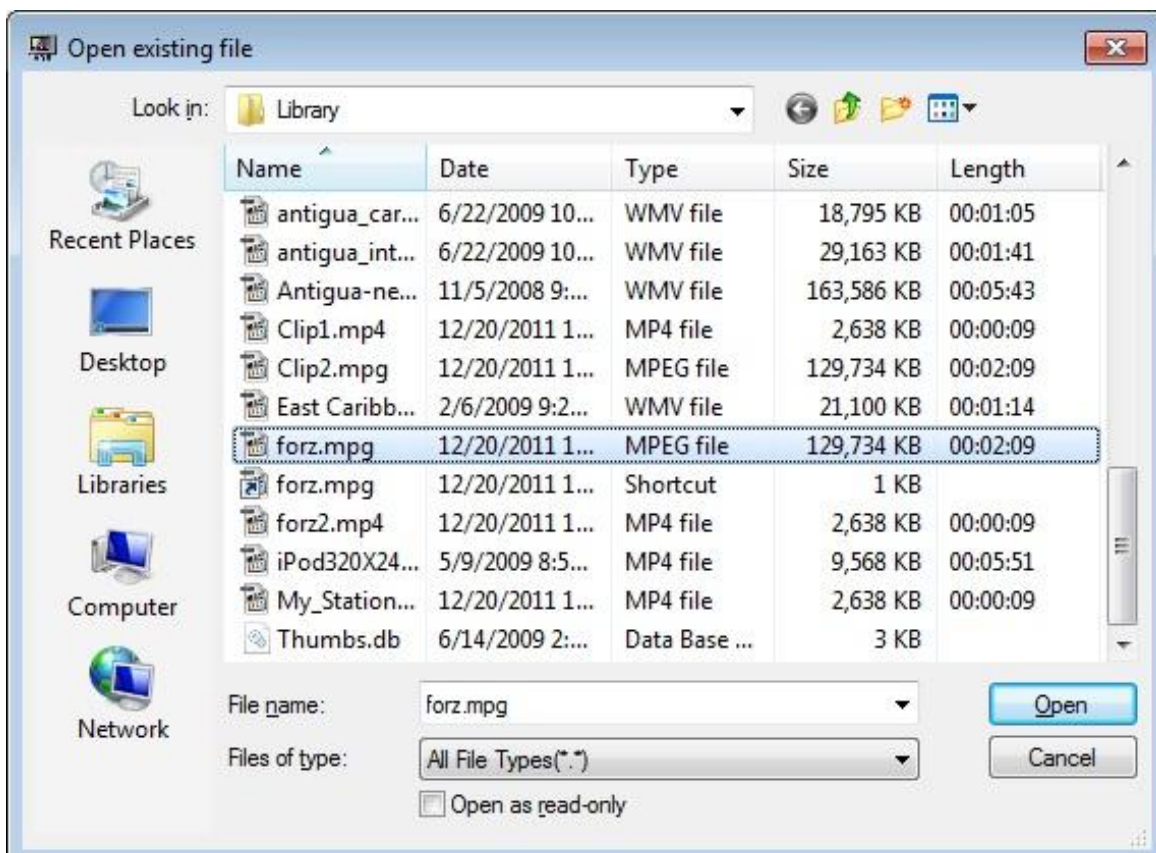
#### 4. Add Video Inventory to the Database:



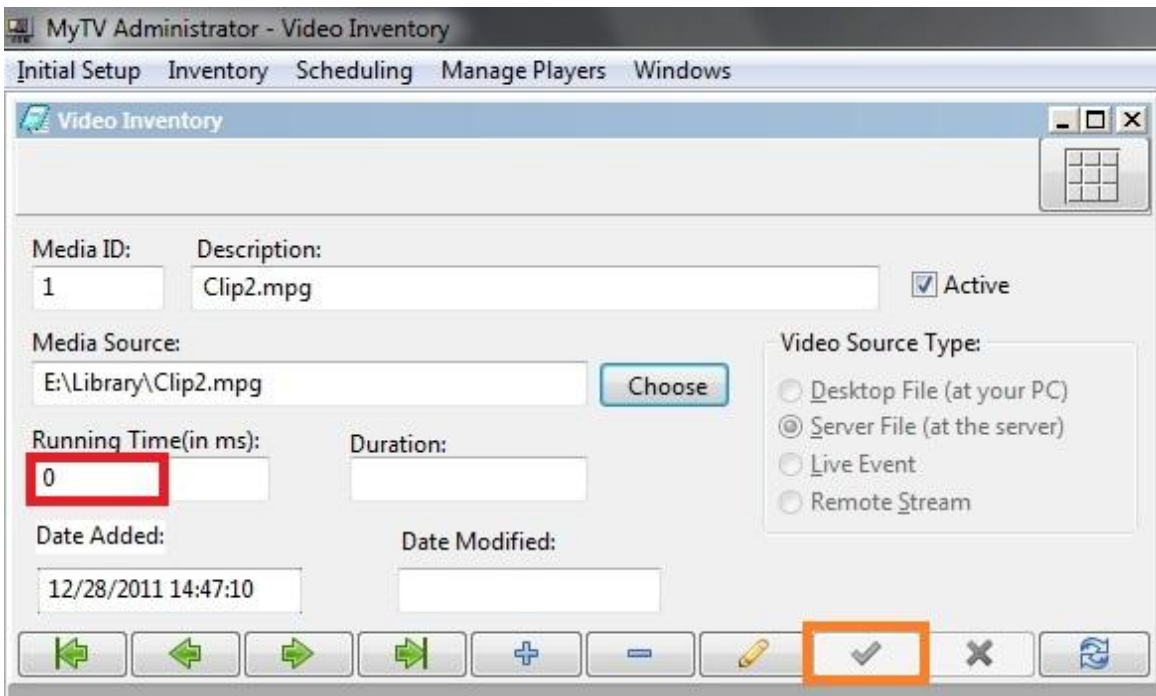
1. Click on Inventory, then the Videos option to add videos to the database.



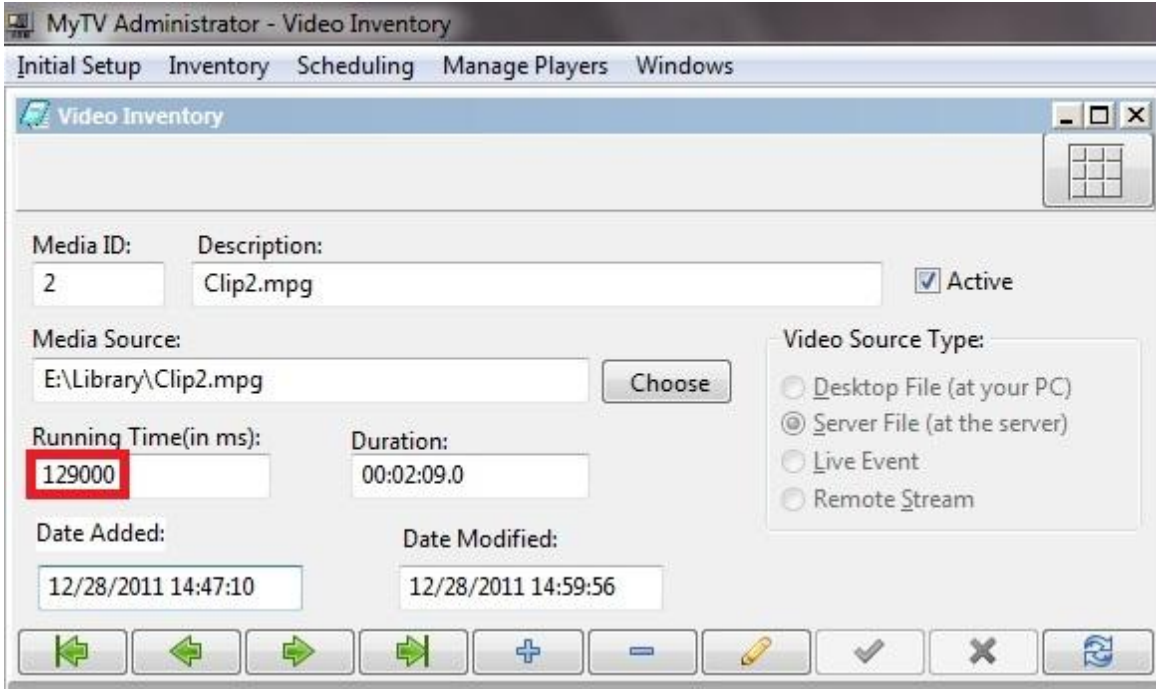
1. Click on the Choose button to select a video from your local drives. The videos do not need to be in any specific folder, but cannot be moved once added to the database, otherwise the Scheduler won't be able to find the video.



1. Select a clip (you will need to copy videos to this PC, or attach an external drive with videos on it, if you don't have any to select).
2. Then click on the Open button.



1. If the clip added is an MPG2 clip, the running time (duration) may not be automatically added. Please add the running time (in milliseconds), then click on the save (check mark) button.



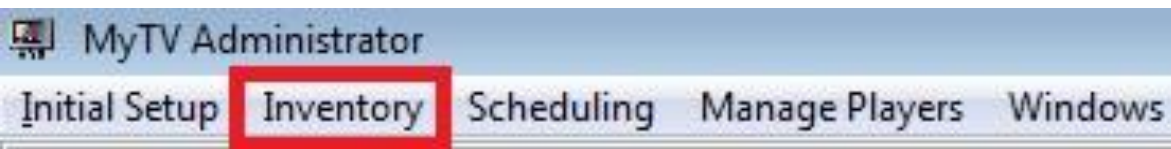
and the clip is saved to the database.

**Note:** Make sure to click on the Add button before clicking on the Choose button, or you might overwrite your video in the inventory.

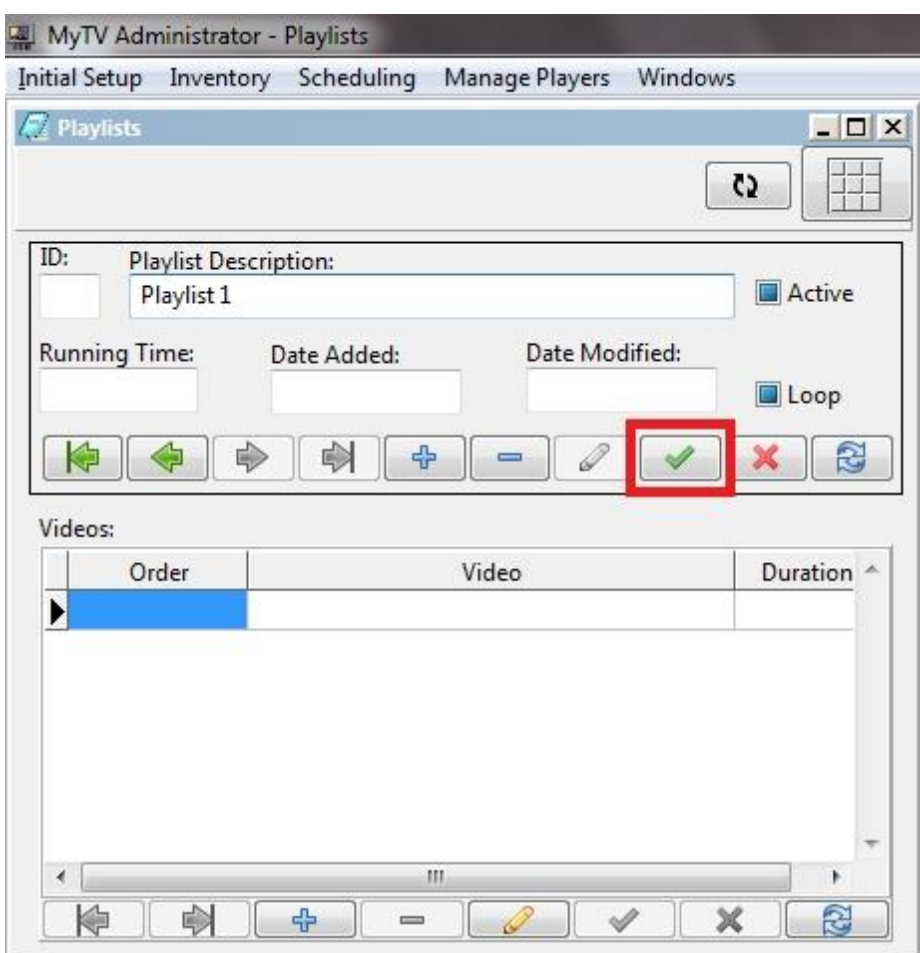
You may also want to give you clips coded names, like com\_Bell\_01\_07\_12, meaning “commercial for Bell, Jan. 7, 2012”, so as to organize the clips when they’re named.

We’ve added more clips, closed the Video Inventory page, and now move on to the Playlists page.

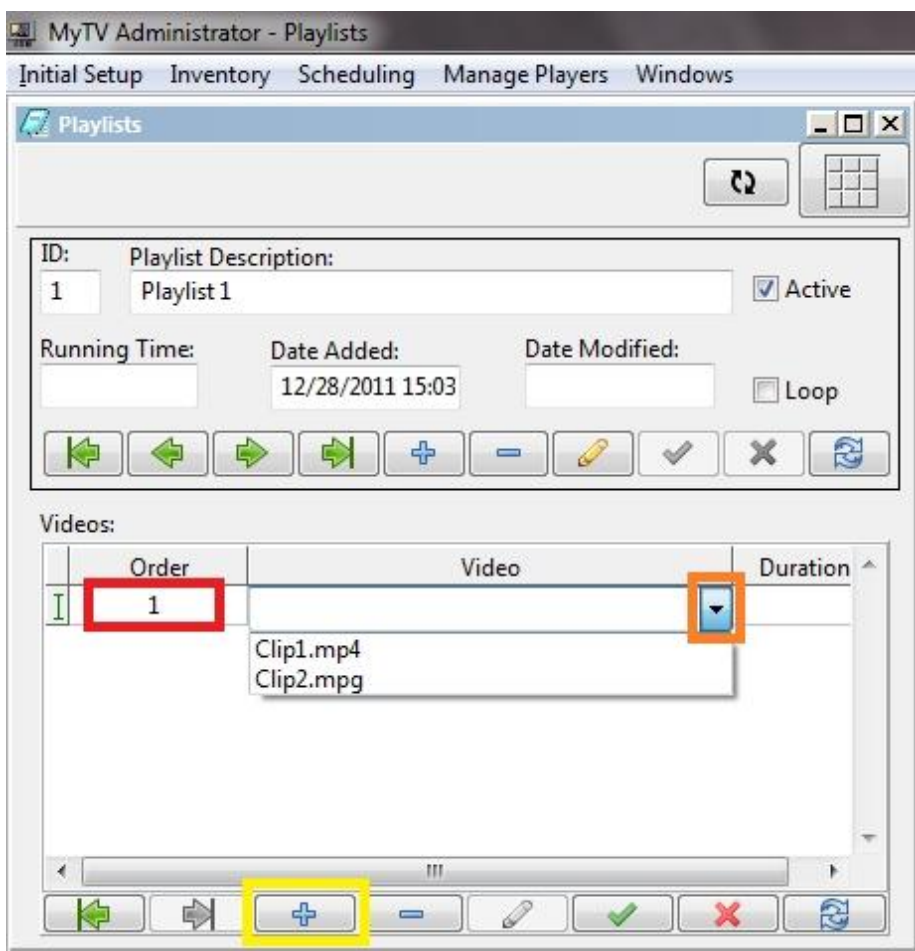
## 5.Create Playlists



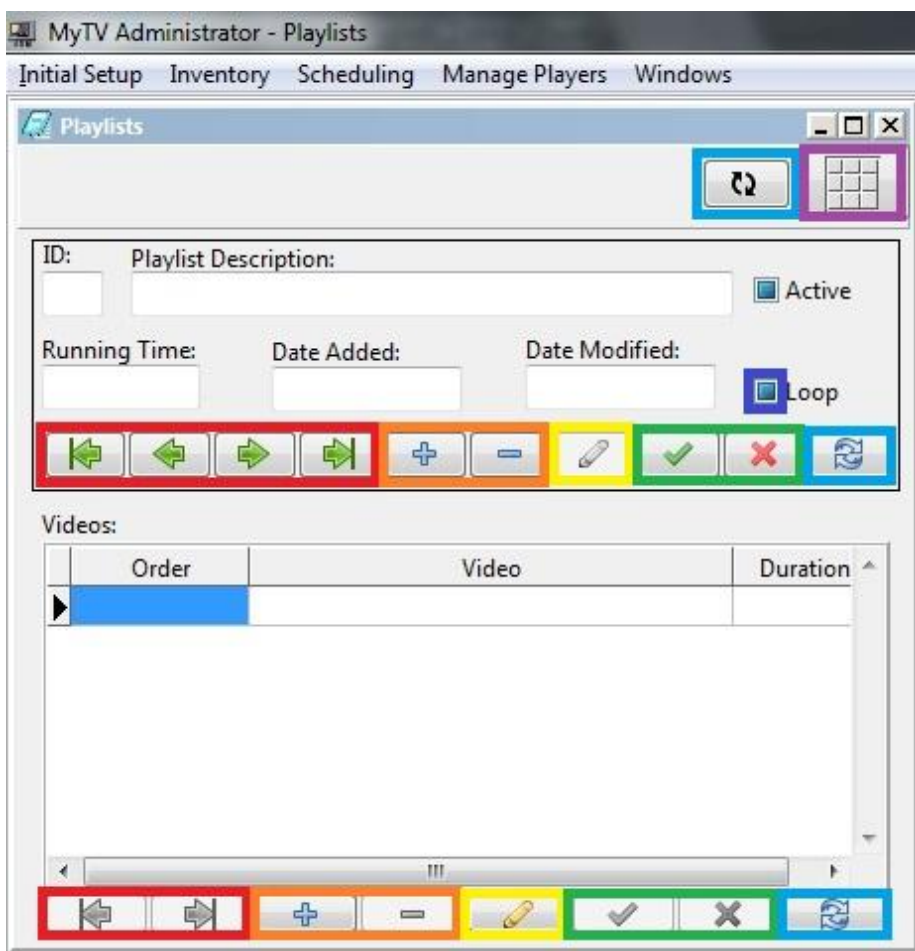
1. Click on Inventory, then Playlists from the menu.



1. Add the Playlist Description
2. Click on the Post (Save) Button to save the Playlist



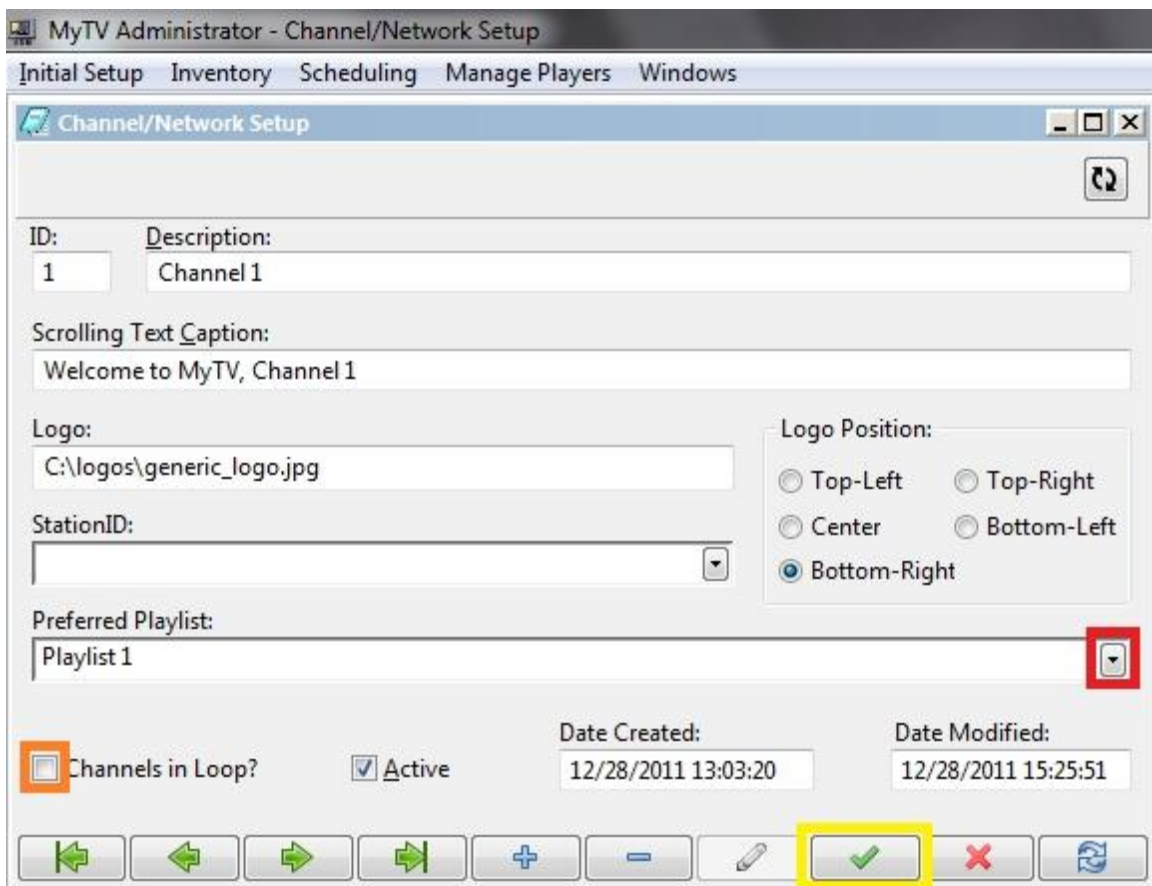
1. Add an order number (like one) to the order field.
2. Click on the drop down arrow in the Video field
3. Select a video from the drop down list.
4. Click on the Add button to add another clip
5. You can change the order of clips by changing their order numbers (but don't create duplicates or you'll get an error).
6. Save the Videos in the Playlist by clicking on the save button in the video field when you're done.
7. Select a video, then click on the Delete button (minus sign) to delete a video from the order.
8. To add more Playlists, click on the Add button in the Playlists section, and start over from item 1. (above).



You can mouse over any of the buttons to see the Tool Tip appear, telling you what the button does, but here's the run down:

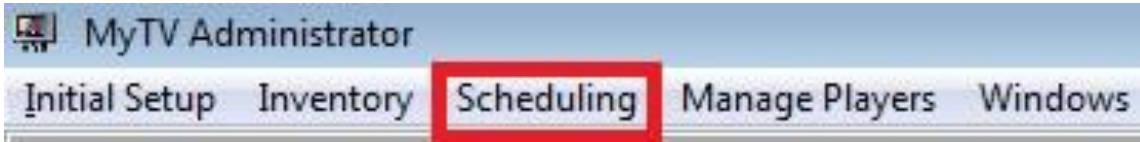
1. The green arrow buttons (red boxes) are the First, Prior, Next and Last Playlist buttons, and sort the Playlists according to their ID Numbers
2. The Insert (Add) and Delete buttons (orange boxes), do just that, they add or delete the current playlist displayed.
3. The Edit button (pencil, yellow box) allows you to edit the current Playlist
4. The Post (Save) and Cancel buttons (green boxes), either save the current changes, or cancel them.
5. The Refresh buttons (blue boxes) refresh either the current section (Playlist or Videos) while the top Refresh button refreshes the entire page.
6. The Toggle On or Off Grid View Button (purple box) shows you the entire list of Playlists at once

## 6. Make a Playlist "Looping":

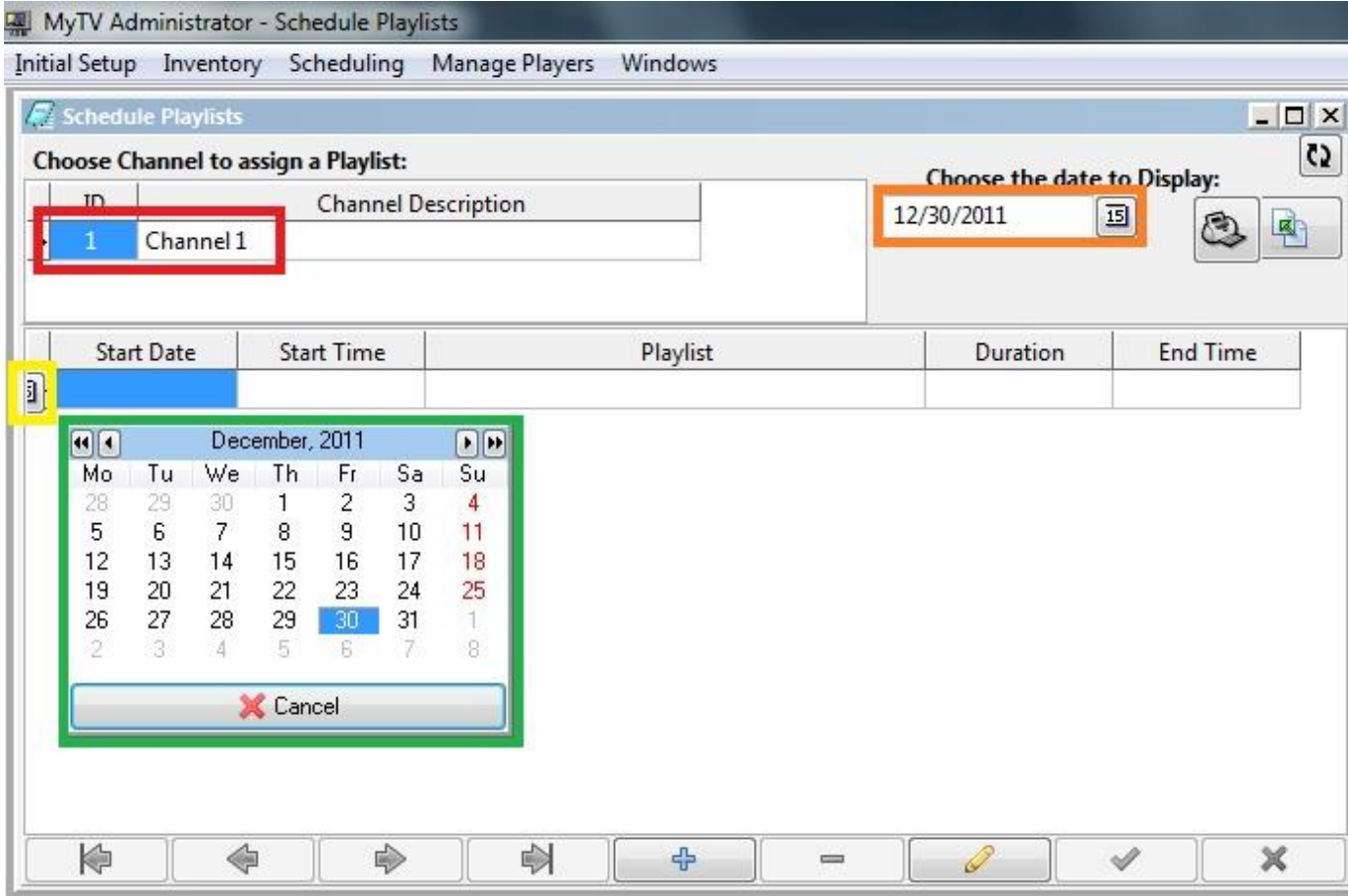


1. Go back to the Channel/Network Setup page, and click on the down arrow in the Preferred Playlist field. If no Playlists are displayed, click on the Refresh button.
2. Select a Playlist from the drop down list.
3. Select the Channels in Loop box to check it.
4. Click on the Post (Save) button to save the changes.
5. Now when the MyTV Client (aka Player) is launched, the Preferred Playlist will start, and continue to loop (repeat) until the MyTV Client is stopped.
6. If you don't want your Playlists to loop, but to play on schedule, deselect the Channels in Loop box.
7. Close this window.

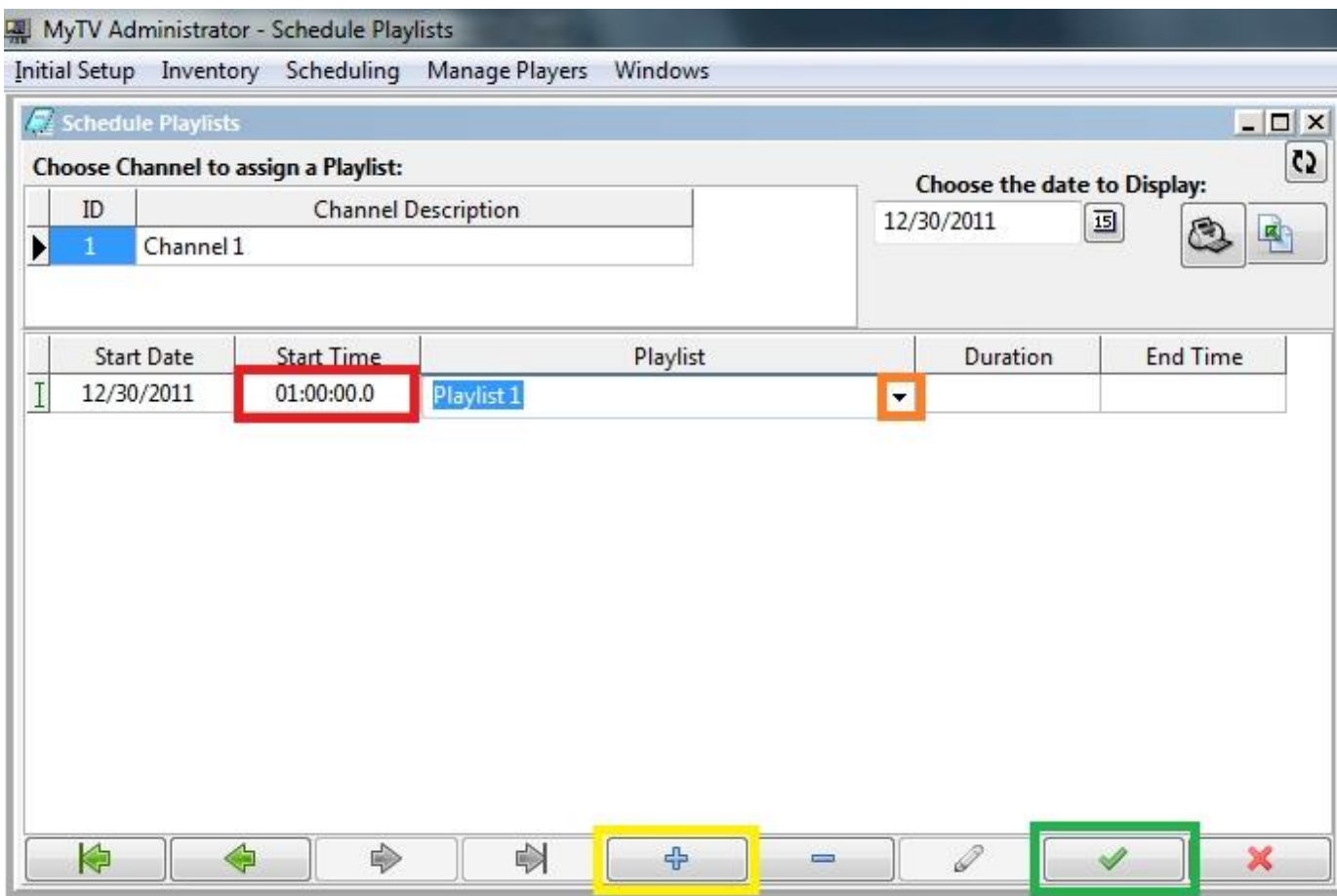
## 7. Schedule Playlists:



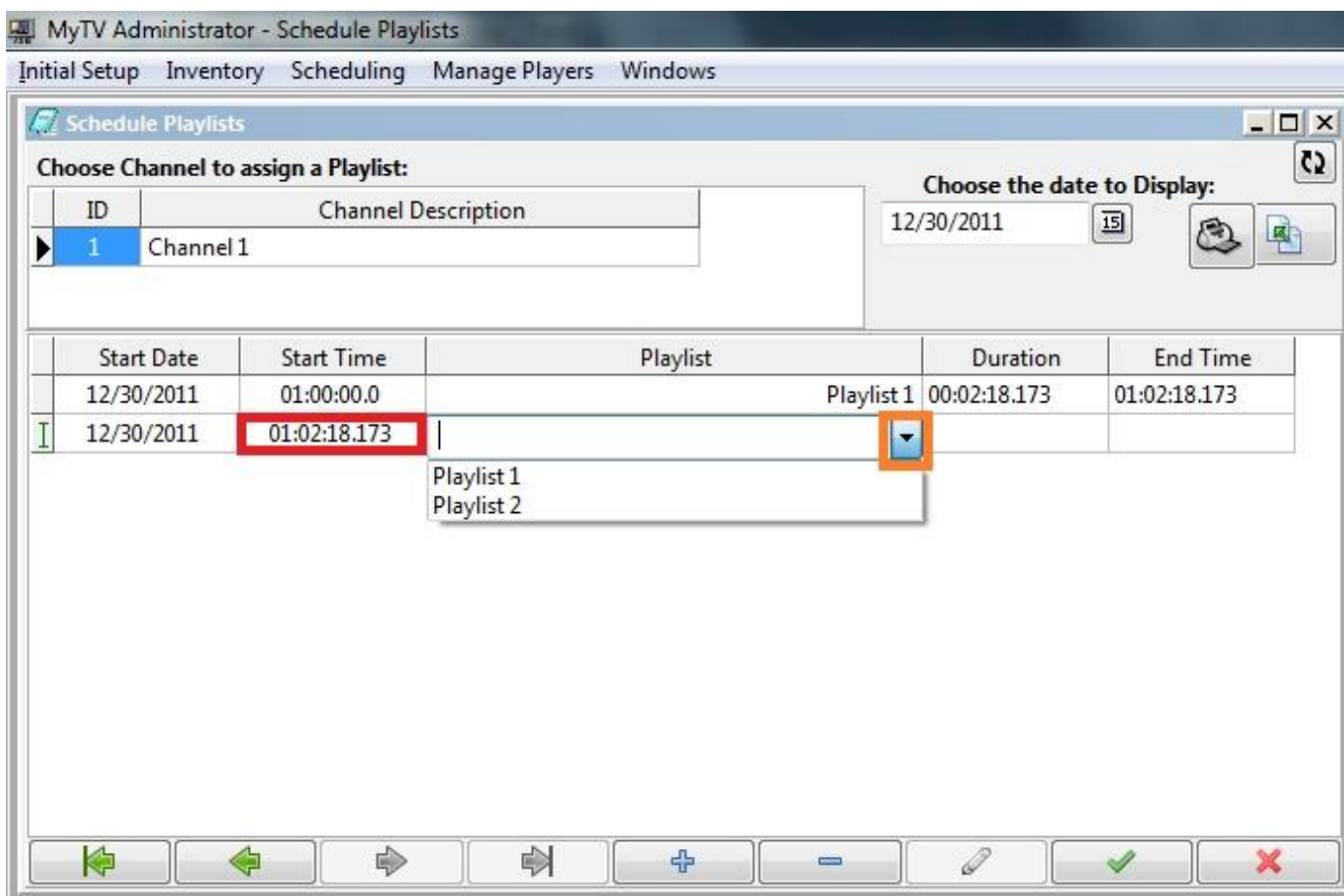
1. Click on "Scheduling", then "Schedule a Playlist" from the menu.



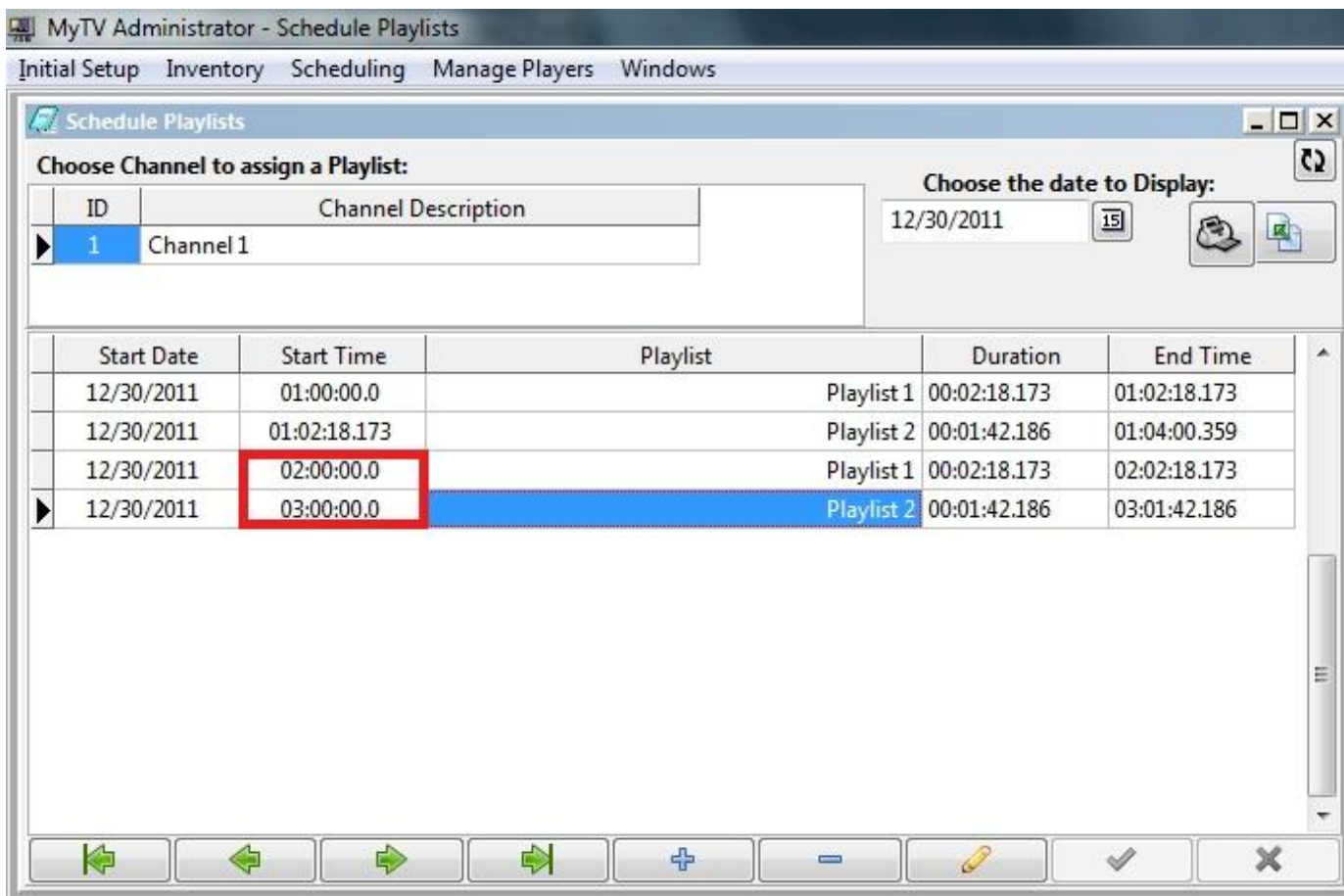
1. If you have created more than 1 Channel, scroll down to the Channel you wish to modify the schedule for.
2. If you wish to schedule playlists for a different date than the current date, click on the small Calendar Icon to the left of the date field, and select a different date.
3. Double-click in the Start Date field and a small Calendar Icon will appear.
4. Double click on the Calendar Icon, and a Calendar will appear.
5. Select the current date (you'll only have to this once, and it's required).



1. Type 0 in the Start Time field for 12 midnight, as the time format used is military.
2. Select a Playlist from the drop down list in the Playlist field.
3. Save the changes by clicking on the Post (save) button.
4. You'll see the Duration and End Time Fields have been populated with the proper information.

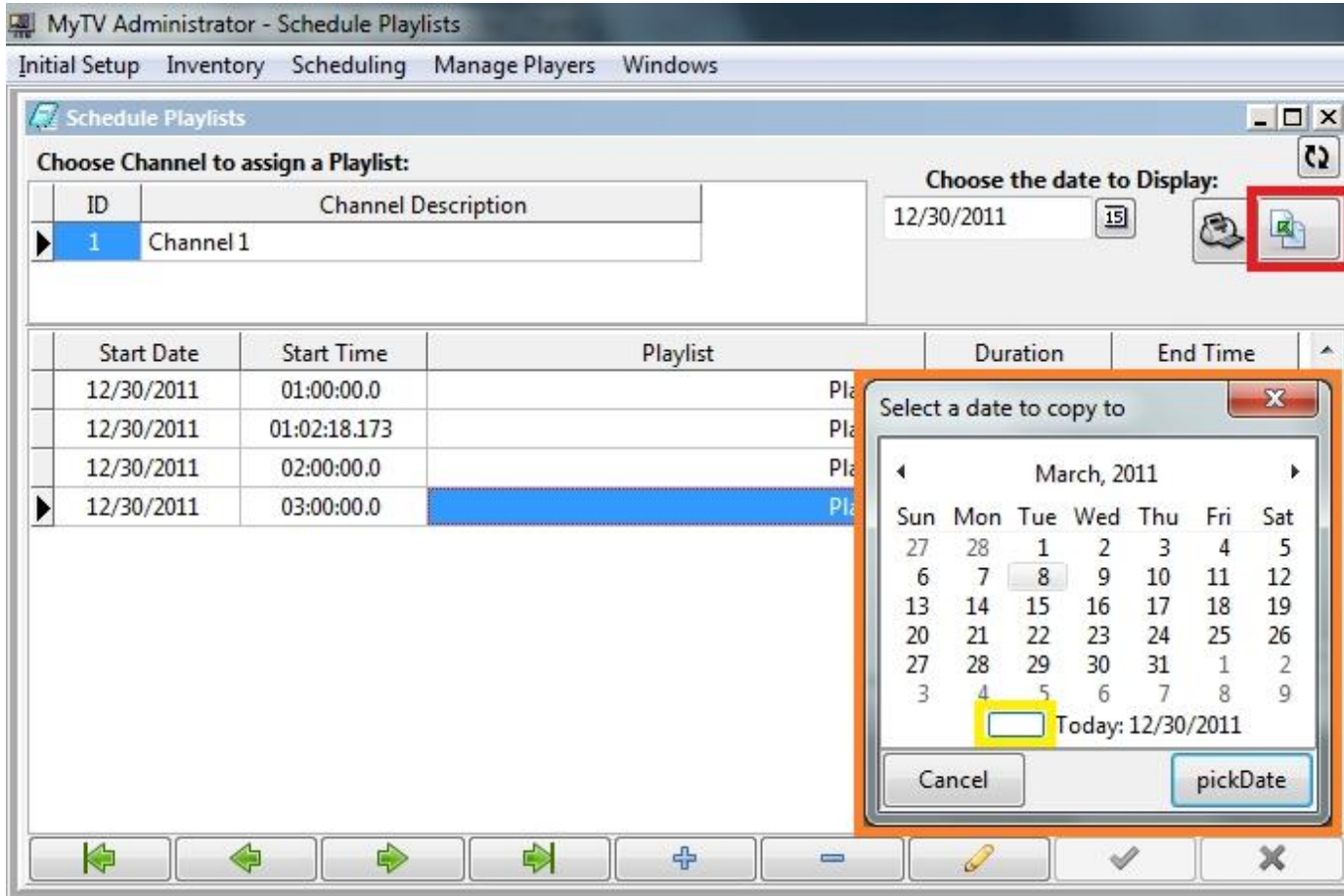


1. If you add another Playlist, then click to Add another, you'll see the date is added automatically, as is the time for the next scheduled playlist, in 12 hour time format.
2. If you don't want to start the next playlist at the set time, just double click in the Start Time field when you want to edit the time, and edit it, making sure to separate the hours, minutes and seconds with colons.
3. When you've edited the time, you'll see the time format change back to military time.
4. The last frame played will stay on the screen until the next scheduled playlist, so make sure you schedule correctly.

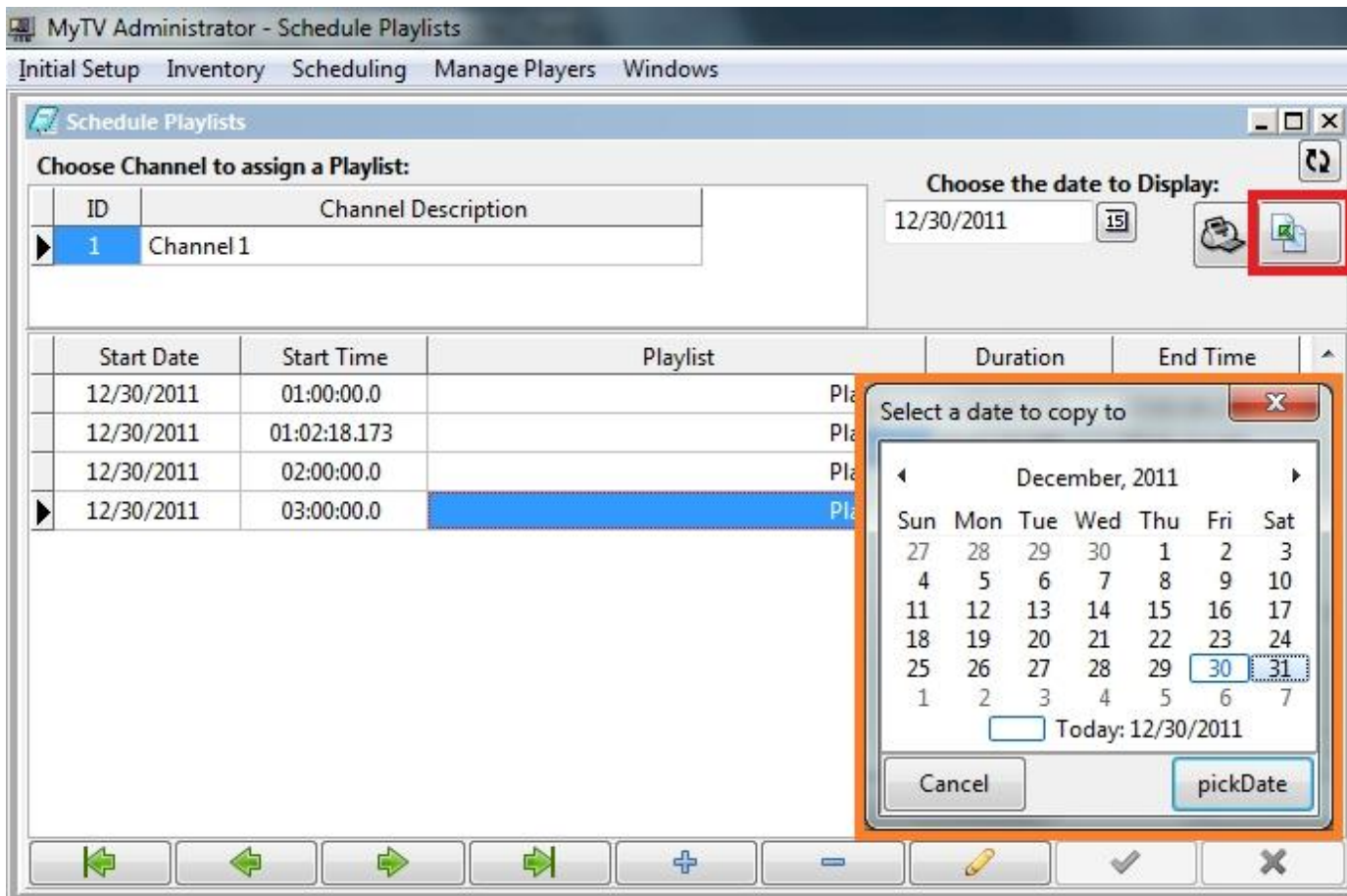


1. You can see from the image that video for the 31<sup>st</sup> of December 2012 will start at 1 AM.
2. At 1 hour, 2 minutes, 18.173 seconds after midnight, Playlist 2 will start, and there will be no gaps between Playlist 1 and Playlist 2.
3. Playlist 2 will end at 1 hour, 4 minutes, 00.359 seconds after midnight, and the last frame of that playlist will be displayed until 2 AM, when Playlist 3 will begin.
4. You can delete scheduled playlists by selecting them and clicking on the Delete (minus) button.
5. Note that you must schedule a playlist at least 2 minutes before you start the MyTV Client (Player), or the scheduled Playlist could be missed, and nothing will play until the next scheduled playlist.

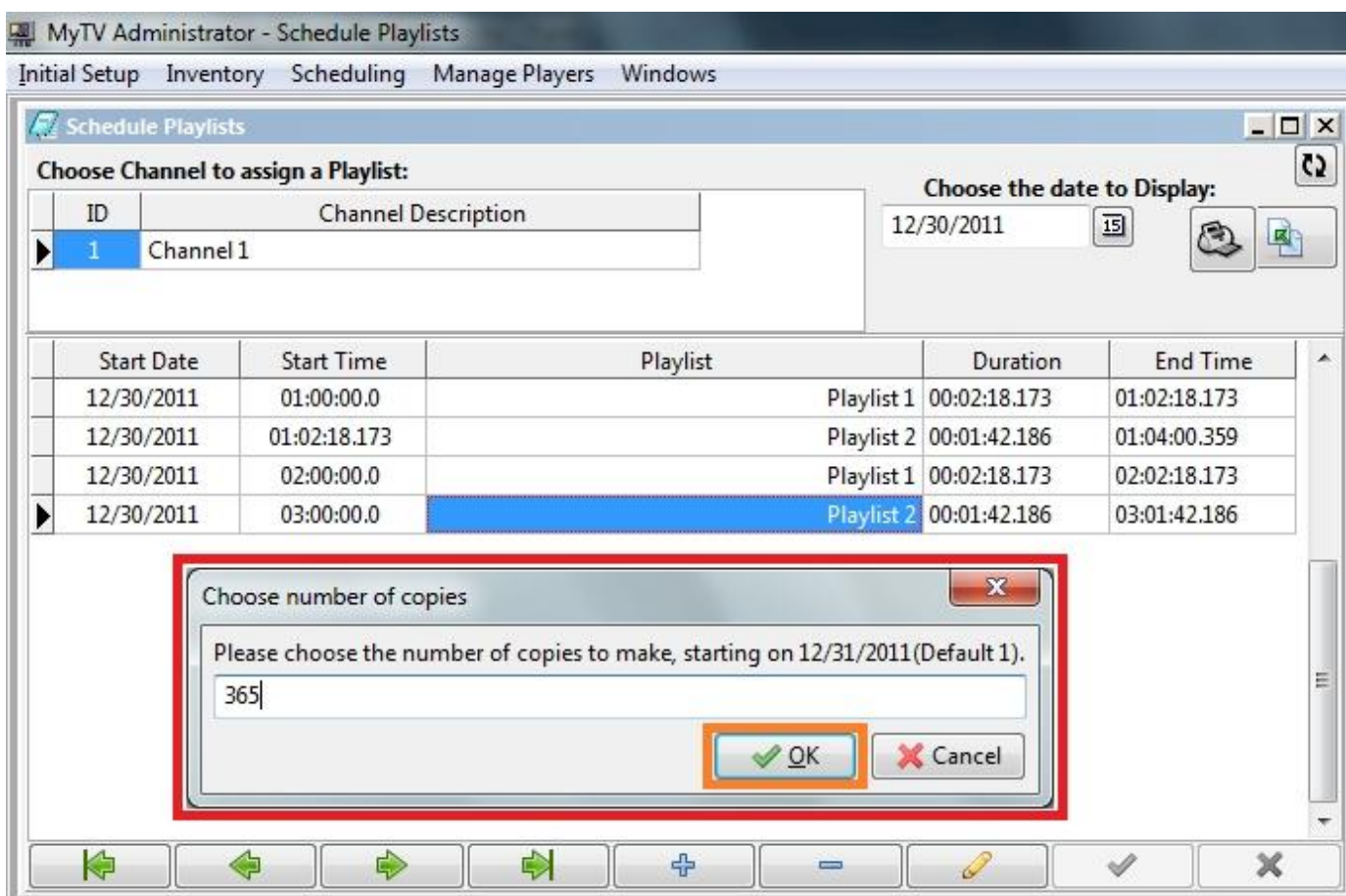
## 8. Copy a Day's Playlist to many other Days:



1. When you select the "Copy One Date to Many" button, a calendar pops up, prompting you to "Select a Date to Copy To".
2. This function will allow you to copy the current days' schedule to many other days, starting with the date that you select as the start date.
3. Clicking on the Today box (yellow) will change the calendar to today's date.

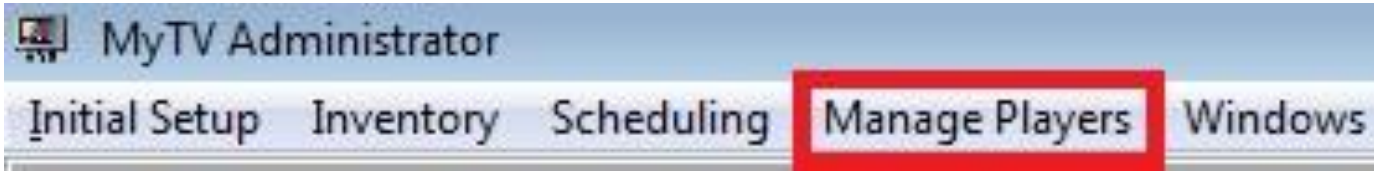


1. Select the date you want to choose as the Start Date, and then click on the Pick Date button.
2. When you select the Start Date, the "Choose Number of Copies" dialog box pops up.

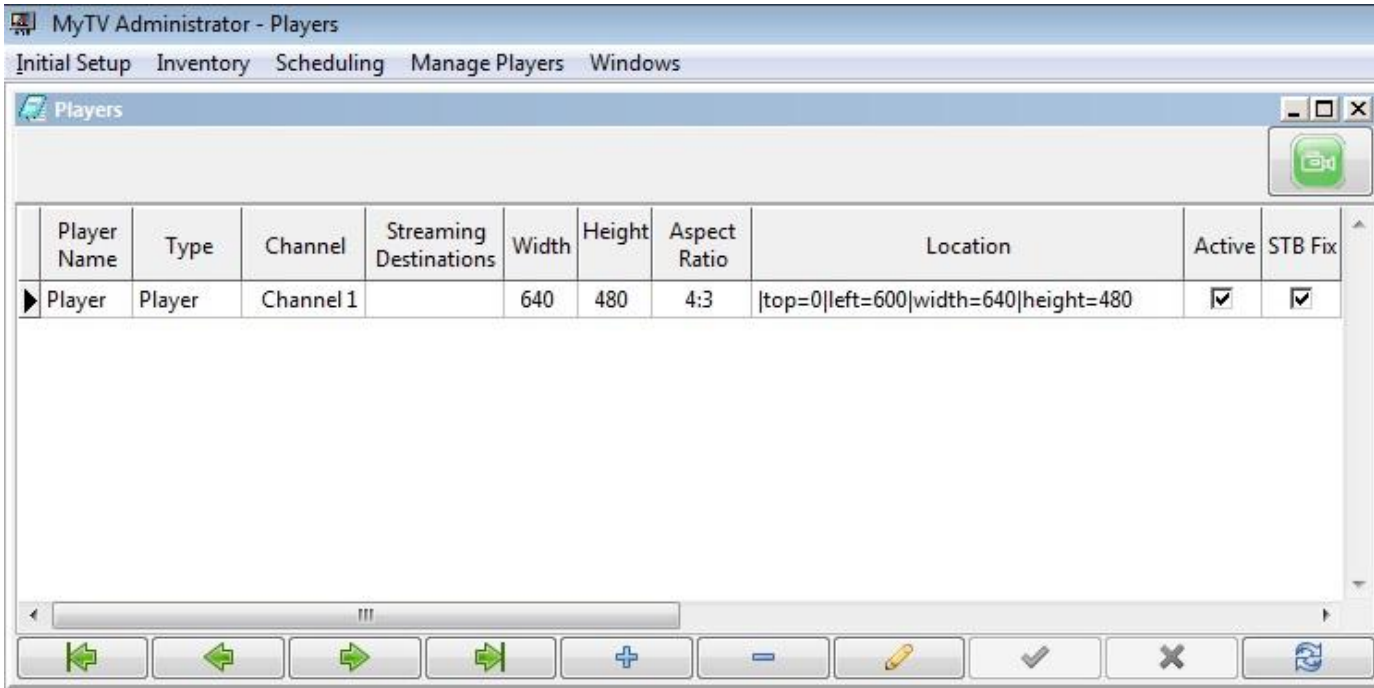


1. Whatever number you add in this field, the program will overwrite the schedules starting on the Start Date, plus the number of days you type here.
2. When you accept the changes, and check the days that you have copied this schedule to, you can see the schedules for those days are now the same as this one.
3. Close the Schedule Playlists window.

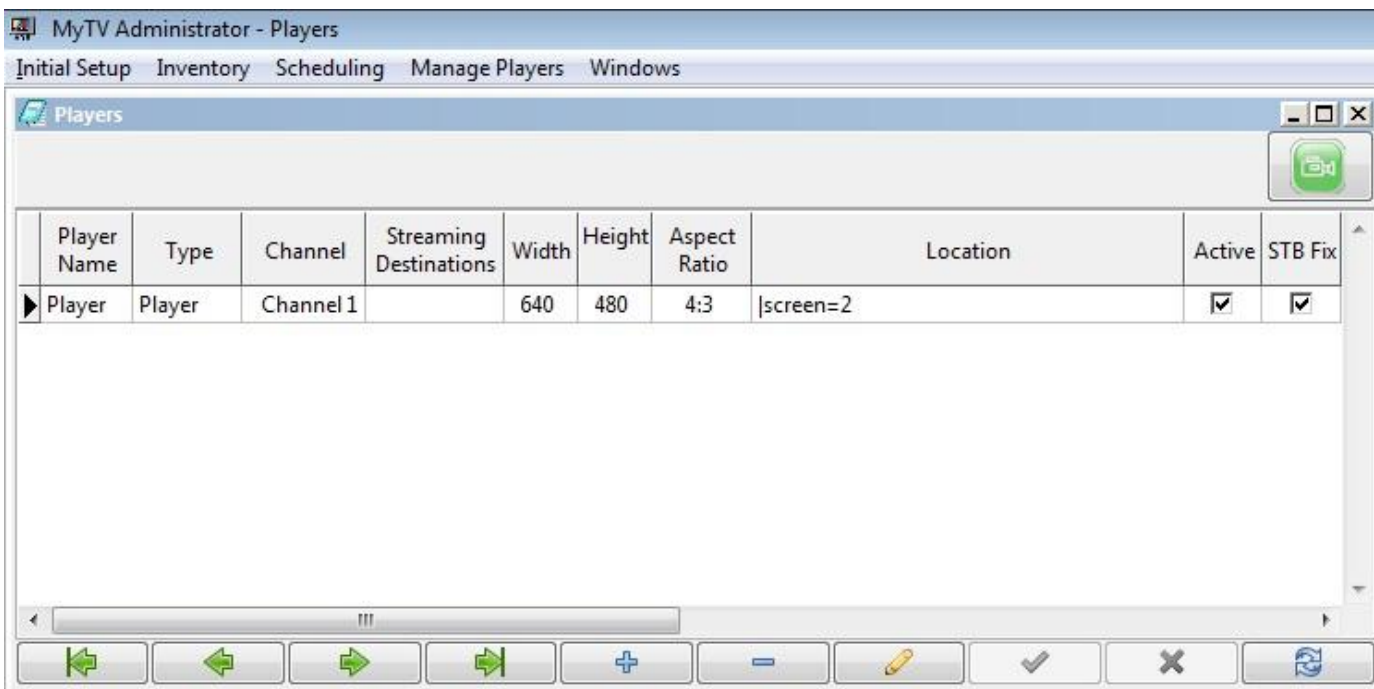
## 9. Manage Players:



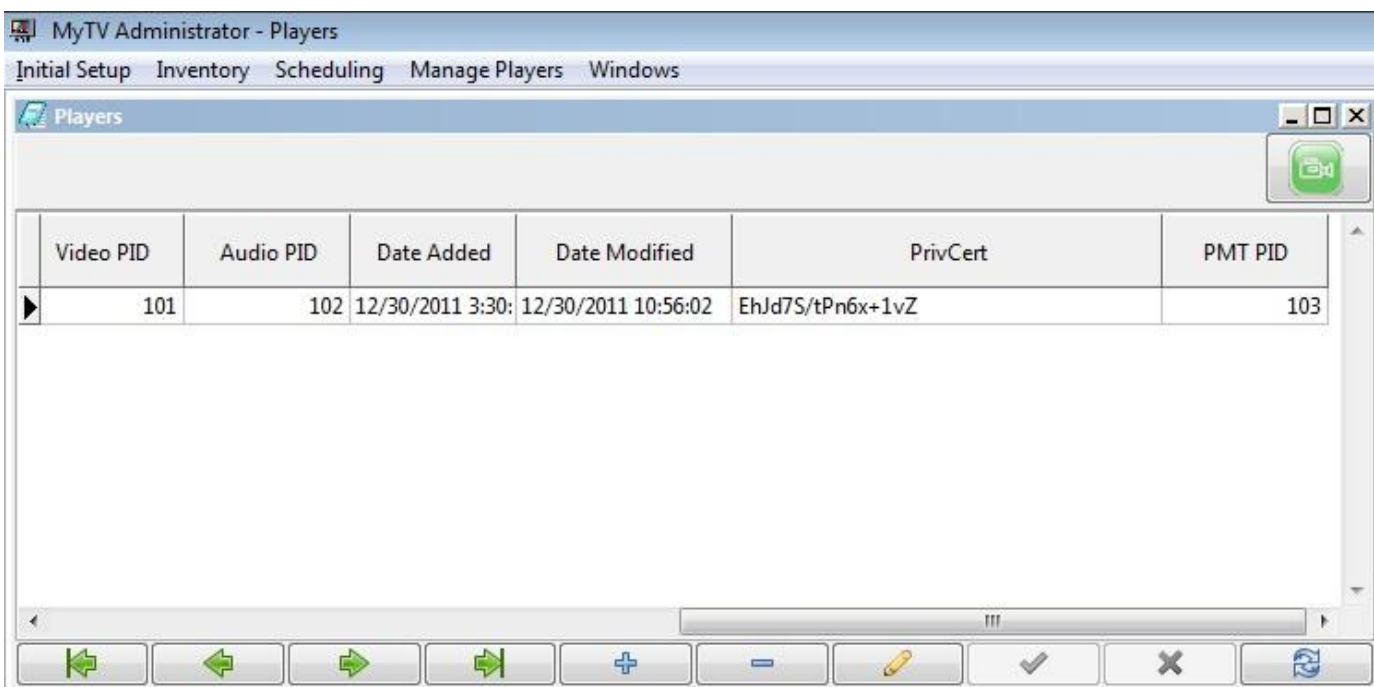
1. Click on “Manage Players”, then Players.



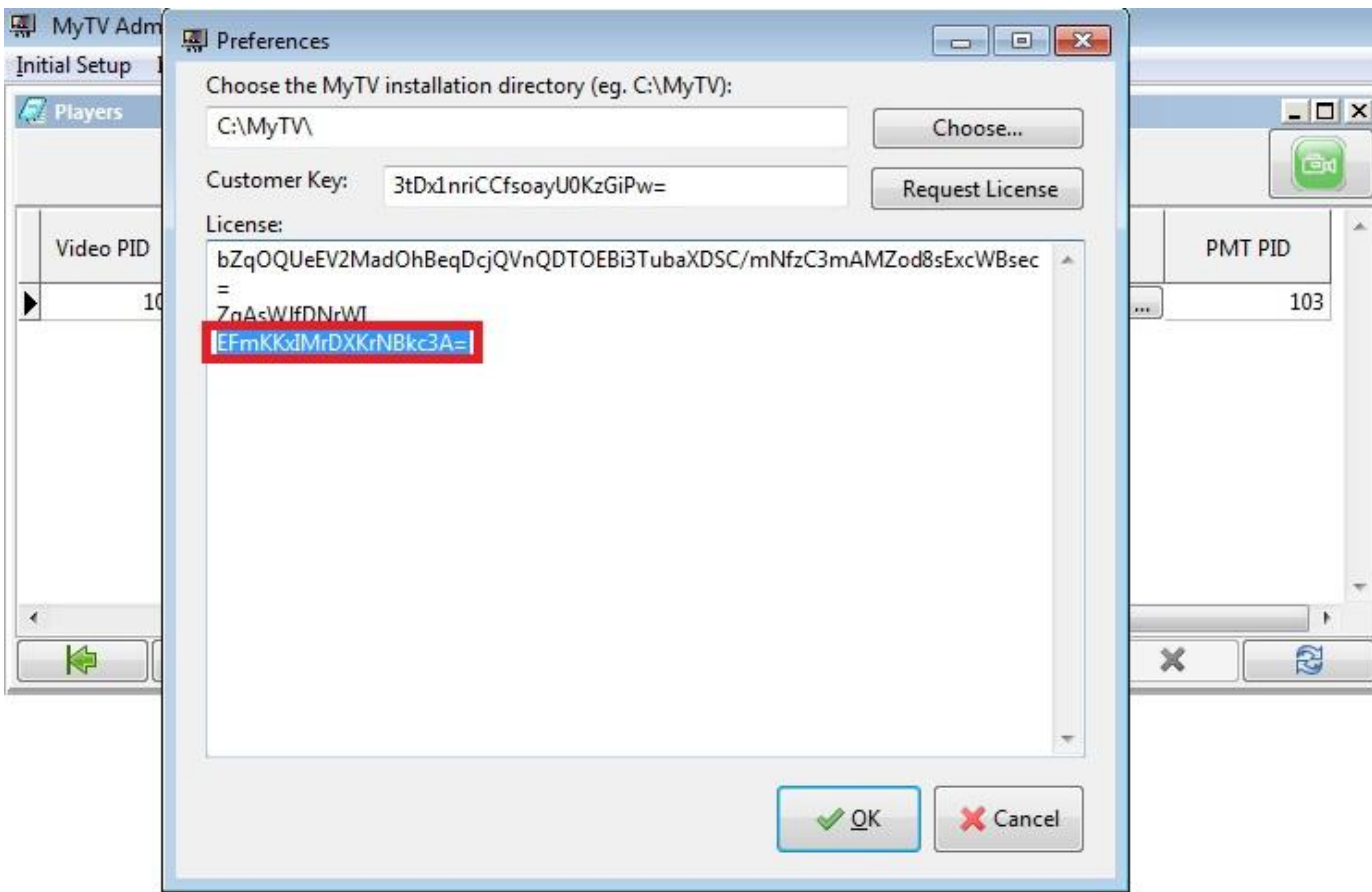
1. If you have one monitor:
2. In the Player Name field, add a unique Player name (like Player).
3. In the Type field, click on the down arrow and select Player, (we’ll demonstrate the Streamer later).
4. In the Channel field, select the appropriate Channel
5. Go to the Location field and enter  
|top=0|left=600|width=640|height=480 in order to display the video in our MyTV Player, in the same screen (monitor) as the MyTV Scheduler.  
Note: the first symbol is “pipe” (the key above the Enter key),
6. Select Active and STB check marks.



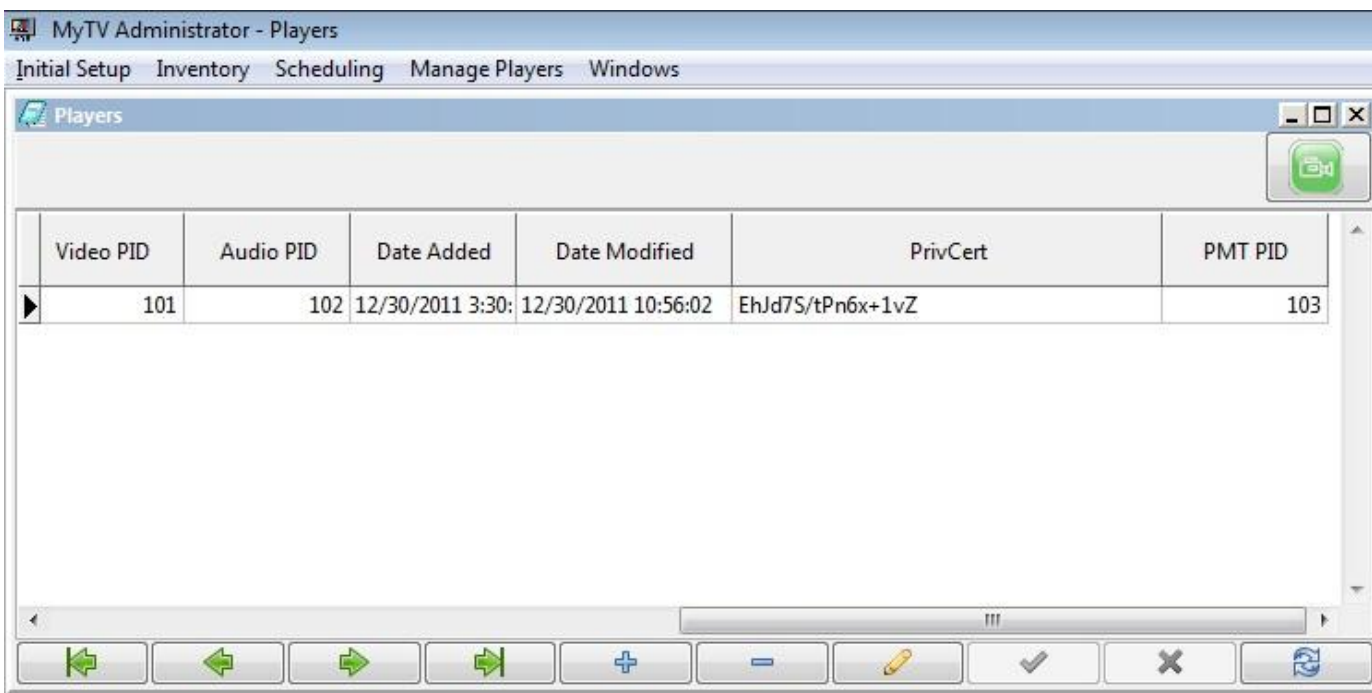
1. If you have Windows connected to 2 monitors (screens):
2. Do as above, except, in the Location field and enter  
|screen=2 to play the video in your 2<sup>nd</sup> monitor Note: the first symbol is “pipe” (the key above the Enter key),
3. You would use the same settings if you want to output the 2<sup>nd</sup> video output to a capture card.



1. The Video, Audio and PMT PID’s need unique ID (numbers) such as those shown
2. The PrivCert field requires a part of your license, or the MyTV Client won’t work.
3. See the following to add the proper string to the PrivCert field:

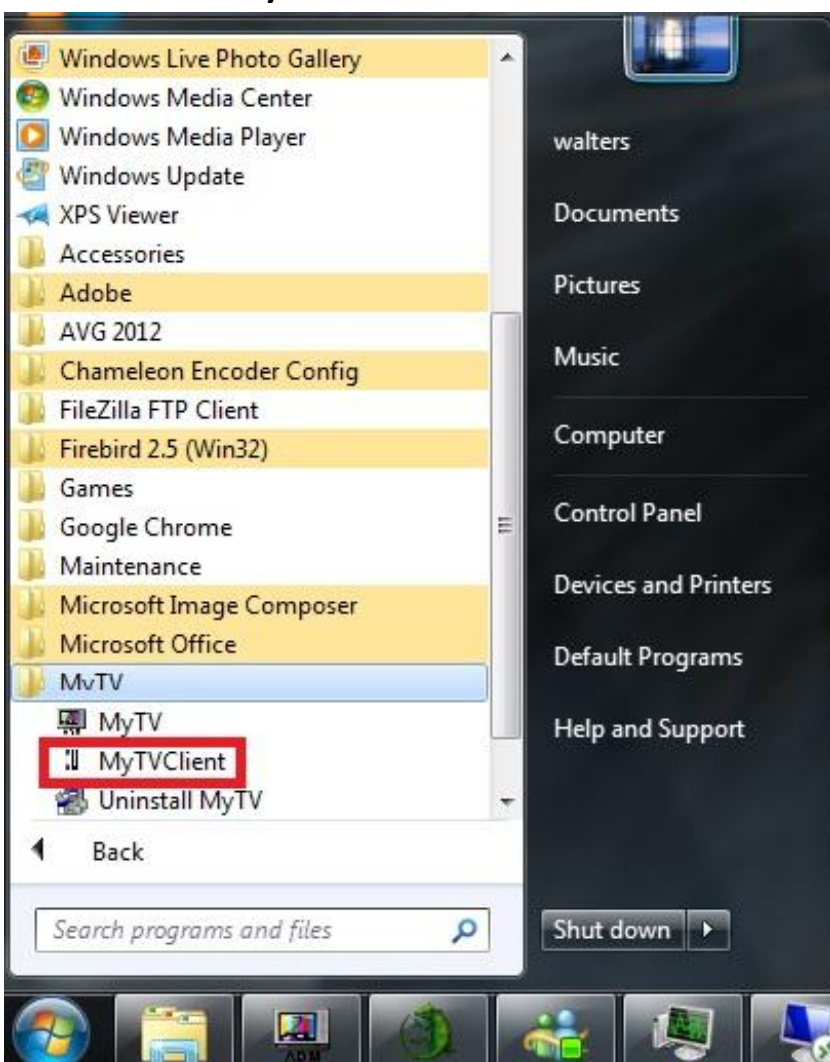


1. Click on the Initial Setup then Preferences on the the Menu.
2. Highlight the last line of your license by clicking and dragging over it with your mouse.
3. Right click on the highlighted text, then select copy from the options.
4. Close the Preferences window by clicking on the cancel button.

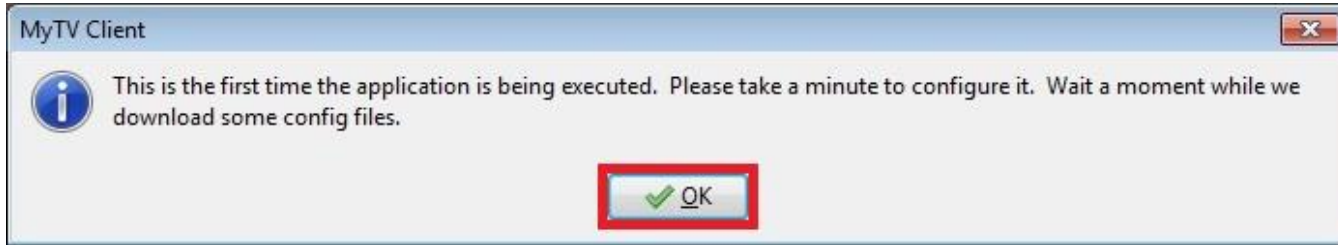


1. Click in the PrivCert field, and highlight the text there (if any).
2. Right-mouse click on the highlighted text (if any), then select paste from the options
3. You should now be correctly licensed for your Player or Streamer.
4. You will need to copy the same procedure for as many Players or Streamers that you have licensed.

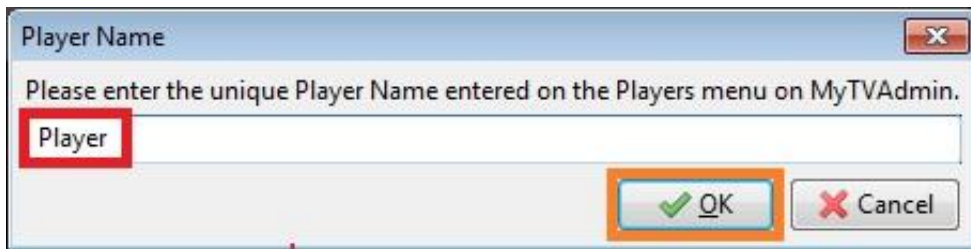
## 10 Launch The MyTV Client:



1. Click on the Windows Start button
2. Click on All Programs
3. Click on the MyTVClient Program listing



1. You'll see this dialog box if this is the first time you've launched the MyTV Client.
2. Click on the OK button to continue.



1. Type the name of the Player that you used in the MyTV Admin Manage Players "Player" field. The name might be "Player".



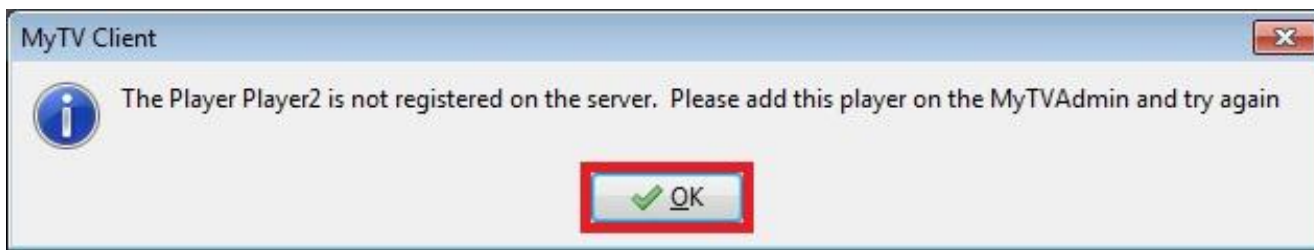
1. In most cases you'll be operating the MyTV Client on the same PC as you're operating the MyTV Admin (and Server). If that's the case, click on Enter to continue.
2. If you're operating the MyTV Client on another PC, type the address of the PC where the MyTV Admin is installed.



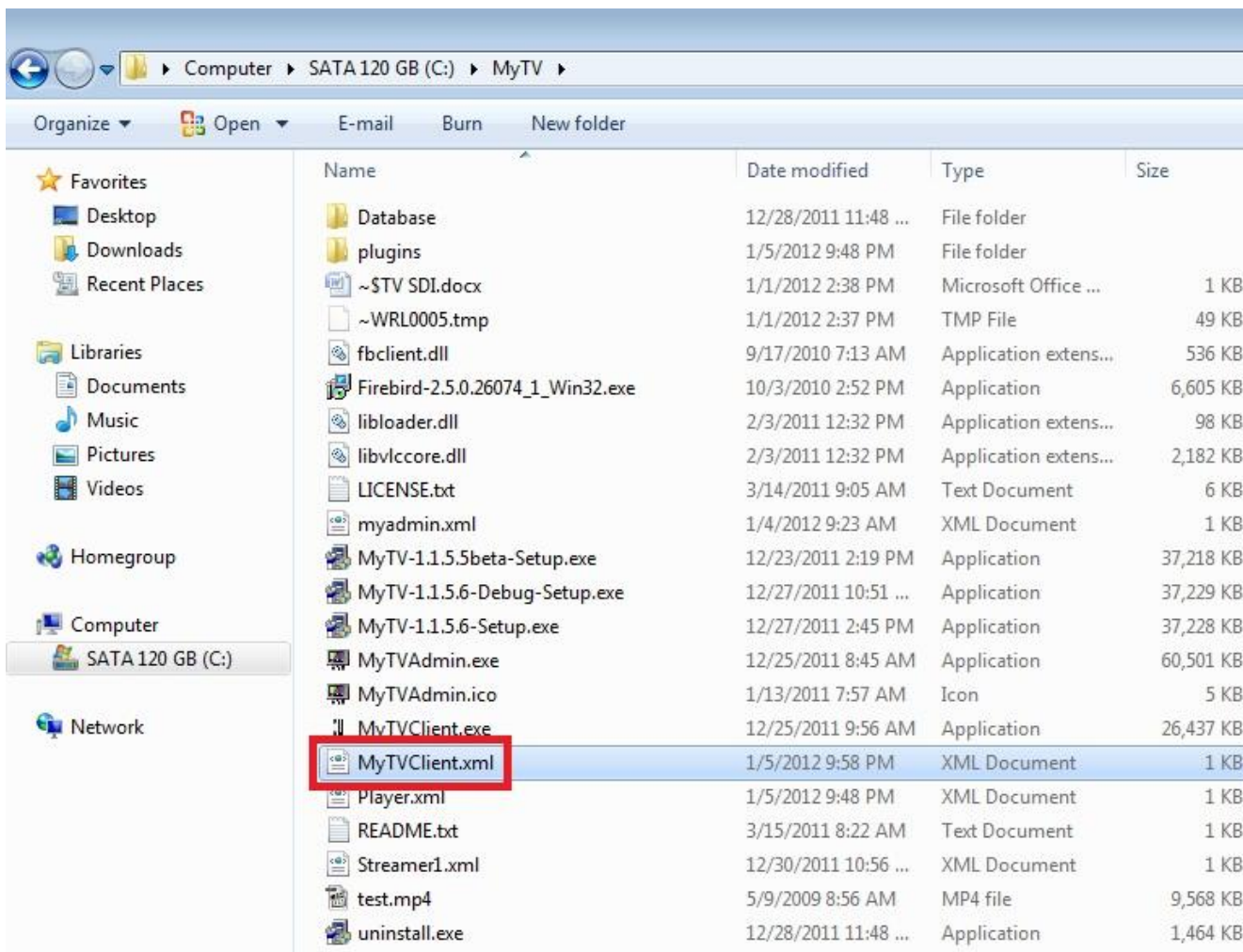
1. Depending on how you setup the Manage Players "Player" you may see the window to the left.
2. It shows the Player is playing, or is waiting to play a scheduled playlist.
3. If the Player is playing full screen in the main monitor, you won't be able to see this window. Do CTL-ALT-DEL and kill the MyTVClient.exe to stop it.
4. If your video window is black, make sure your playlists are scheduled at least 2 minutes after you start the MyTV Client to give it time to read the playlist info from the database. Also, check to make sure the path to your videos is correct... if your videos have been moved or are connected to an external drive that's no longer connected, you'll get a black screen.



1. If your license is incorrect, you'll see the window to the left.
2. Correct the license as shown in the Manage Players section.
3. If your license is expired, you'll see that notice.
4. Contact [support@microvideo.com](mailto:support@microvideo.com) if you require further assistance or to get a license extension.



1. If you get an error such as the one to the left, it means the name you entered in the Player Name field in the Manage Players “Players” field in the MyTV Admin doesn’t match with the Player name you provided for the MyTV Client.
2. You either need to add (or change the name in the MyTV Admin, or delete the MyTVClient.xml file, so that you can start off fresh again with a new MyTV Client Player name.



1. Open My Computer (Windows Explorer) and go to the MyTV folder (by default installed on your C drive).
2. Locate the MyTVClient.xml file. If you can’t see the extension “.xml”, then make sure the icon beside it looks like the one in the image to the left.
3. Right mouse click on the file and select delete from the options.
4. Now you can start the Player again and enter the same name as you’ve entered into the MyTV Admin Manage Players “Player” field.